



---

# WD-1030 AC1200 Wireless USB Adapter

## User Manual

Version 1.0, September 1, 2015

---



## **COPYRIGHT**

Copyright ©2015 by Comtrend. All rights reserved. No part of this publication may be reproduced, transmitted, transcribed, stored in a retrieval system, or translated into any language or computer language, in any form or by any means, electronic, mechanical, magnetic, optical, chemical, manual or otherwise, without the prior written permission of Comtrend Corporation.

Comtrend Corporation makes no representations or warranties, either expressed or implied, with respect to the contents hereof and specifically disclaims any warranties, merchantability or fitness for any particular purpose. Any software described in this manual is sold or licensed "as is". Should the programs prove defective following their purchase, the buyer (and not Comtrend Corporation, its distributor, or its dealer) assumes the entire cost of all necessary servicing, repair, and any incidental or consequential damages resulting from any defect in the software. Further, Comtrend Corporation reserves the right to revise this publication and to make changes from time to time in the contents thereof without obligation to notify any person of such revision or changes.

## **Federal Communication Commission**

### **Interference Statement**

This equipment has been tested and found to comply with the limits for a Class B digital device, pursuant to Part 15 of FCC Rules. These limits are designed to provide reasonable protection against harmful interference in a residential installation. This equipment generates, uses, and can radiate radio frequency energy and, if not installed and used in accordance with the instructions, may cause harmful interference to radio communications. However, there is no guarantee that interference will not occur in a particular installation. If this equipment does cause harmful interference to radio or television reception, which can be determined by turning the equipment off and on, the user is encouraged to try to correct the interference by one or more of the following measures:

- ※ Reorient or relocate the receiving antenna.
- ※ Increase the separation between the equipment and receiver.
- ※ Connect the equipment into an outlet on a circuit different from that to which the receiver is connected.
- ※ Consult the dealer or an experienced radio technician for help.

### **FCC Caution**

This device complies with Part 15 of the FCC Rules. Operation is subject to the following two conditions: (1) this device may not cause harmful interference, and (2) this device must accept any interference received, including interference that may cause undesired operation.

Any changes or modifications not expressly approved by the party responsible for compliance could void the authority to operate equipment.

## **Federal Communication Commission (FCC) Radiation Exposure Statement**

This EUT is compliance with SAR for general population/uncontrolled exposure limits in ANSI/IEEE C95.1-1999 and had been tested in accordance with the measurement methods and procedures specified in OET Bulletin 65 Supplement C.

The equipment version marketed in US is restricted to usage of the channels 1-11 only and should be installed and operated with minimum distance 0.5cm between the radiator & your body.

This device is restricted to indoor use when operated in the 5.15 to 5.25 GHz frequency range.

- ※ FCC requires this product to be used indoors for the frequency range 5.15 to 5.25 GHz to reduce the potential for harmful interference to co-channel Mobile Satellite systems.

## **R&TTE Compliance Statement**

This equipment complies with all the requirements of DIRECTIVE 1999/5/EC OF THE EUROPEAN PARLIAMENT AND THE COUNCIL of March 9, 1999 on radio equipment and telecommunication terminal Equipment and the mutual recognition of their conformity (R&TTE) The R&TTE Directive repeals and replaces in the directive 98/13/EEC (Telecommunications Terminal Equipment and Satellite Earth Station Equipment) As of April 8, 2000.

### **Safety**

This equipment is designed with the utmost care for the safety of those who install and use it. However, special attention must be paid to the dangers of electric shock and static electricity when working with electrical equipment. All guidelines of this and of the computer manufacture must therefore be allowed at all times to ensure the safe use of the equipment.

# Table of Contents

<b>Chapter 1 Product Information.....</b>	<b>1</b>
1-1 Introduction .....	1
1-2 Safety Information.....	2
1-3 System Requirements .....	3
1-4 Package Contents.....	4
1-5 Familiar with your new wireless USB adapter .....	5
<b>CHAPTER 2 Installation and Configuration.....</b>	<b>6</b>
2-1 USB adapter Installation.....	6
2-2 Connect to a Wireless Access Point .....	13
2-3 Profile Settings .....	18
2-3-1 Add a new profile.....	18
2-3-2 Remove an existing profile.....	21
2-3-3 Edit an existing profile .....	23
2-3-4 Import / Export profile .....	23
2-3-5 WPS Profile Setup .....	25
2-3-5-1 PBC mode WPS configuration .....	28
2-3-5-2 PIN mode WPS configuration.....	29
2-4 Link Information .....	32
2-5 About.....	35
<b>CHAPTER 3 Soft-AP Function .....</b>	<b>36</b>
3-1 Switch to AP Mode.....	36
3-2 Configure AP.....	38
3-3 Access Control.....	41
3-4 Associate List.....	43
3-5 About.....	44
<b>CHAPTER 4 Client + AP Function .....</b>	<b>45</b>
4-1 Switch to Client + AP Mode .....	45
4-2 Configure AP.....	47
4-3 Available Networks .....	49
4-4 Link Information .....	51
4-5 Profile Settings .....	54
4-5-1 Add a new entry.....	54
4-5-2 Remove an existing profile.....	57
4-5-3 Edit an existing profile .....	58
4-5-4 Import / Export profile .....	59
4-5-5 WPS Profile Setup .....	61

4-5-5-1 PBC mode WPS configuration .....	63
4-5-5-2 PIN mode WPS configuration.....	64
4-6 About.....	67
<b>CHAPTER 5 Troubleshooting .....</b>	<b>68</b>

**The setup images used in this manual are for reference only. The contents of these images may vary according to software version. The official image contents are based on the newest software version.**

# Chapter 1 Product Information

## 1-1 Introduction

Thank you for purchasing this high-speed 802.11a/b/g/n/ac dual band wireless USB adapter! Accepting common wireless standards 802.11a/b/g/n, this wireless USB adapter is also 802.11ac compatible – with a data transfer rate of 867Mbps, that's three times faster than an 802.11n wireless network! 802.11ac also provides wider wireless coverage, so you don't have to worry if your computer is far from your wireless access point.

With an easy-to-install USB 3.0 interface - a very common expansion port of computers - plug this wireless USB adapter into any empty USB port of your computer, it's just that simple!

*Other features of this product include:*

- IEEE 802.11a/b/g/n/ac compatible
- Very high transfer data rate – 11ac up to 867Mbps, 11n up to 300Mbps
- Supports WMM wireless QoS feature
- Supports WPA, WPA2 with IEEE 802.1x functions for high level security
- Supports the most popular operating systems: Windows XP, Windows Vista, Windows 7, Windows 8
- Supports WPS (Wi-Fi Protected Setup) hardware button for easy connection
- Supports USB 3.0/2.0 interface. (11ac mode - USB 3.0 is required )
- Portable dongle type design



## 1-2 Safety Information

Please follow these safety instructions:

1. This USB wireless USB adapter is designed for indoor use only. DO NOT expose this USB adapter to direct sun light, rain, or snow.
2. DO NOT put this USB adapter at or near hot or humid places, like a kitchen or bathroom. Also, do not leave this wireless USB adapter in the car in summer.
3. This USB adapter is small enough to put in a child's mouth, and it could cause serious injury or could be fatal. If they throw the USB adapter, the card will be damaged. PLEASE KEEP THIS USB ADAPTER OUT THE REACH OF CHILDREN!
4. This USB adapter will become hot when being used for long time (***This is normal and is not a malfunction***). DO NOT put the USB adapter on a paper, cloth, or other flammable objects after the USB adapter has been used for a long time.
5. There's no user-serviceable part inside the USB adapter. If you find that the USB adapter is not working properly, please contact your dealer of purchase and ask for help. DO NOT disassemble the USB adapter by yourself, warranty will be void.
6. If the USB adapter falls into water, DO NOT USE IT AGAIN BEFORE YOU SEND THE CARD TO THE PLACE OF PURCHASE FOR INSPECTION.
7. If you smell something strange or even see some smoke coming out from the USB adapter, switch the computer off immediately, and call the place of purchase for help.

## **1-3 System Requirements**

- An empty USB 3.0/2.0 port (11ac mode - USB 3.0 is required ) (May not be able work with USB 1.1 port, and performance will be greatly reduced)
- Windows 7 or Windows 8 operating system
- CD-ROM drive
- At least 100MB of available disk space

## 1-4 Package Contents

Before you start to use this wireless USB adapter, please check if there's anything missing in the package, and contact your dealer of purchase to claim for missing items:

- USB wireless USB adapter (1 pcs) ..... 1
- Quick Install Guide (1 pcs) ..... 2
- Driver/Utility/ CD-ROM (1 pcs) .....3

## 1-5 Familiar with your new wireless USB adapter

1. USB Connector
2. Link/Activity LED
3. WPS Button (Press to activate WPS pairing mode)



LED Name	Light Status	Description
Link/ Activity	Blinking	Linked to a wireless access point / Transferring data
	Off	Power off

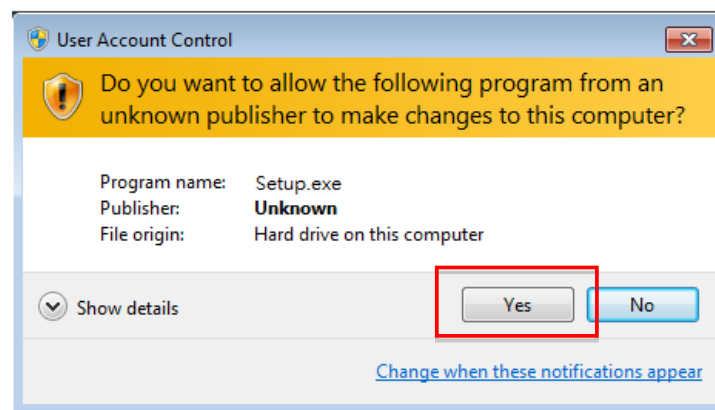
## CHAPTER 2 Installation and Configuration

### 2-1 USB adapter Installation

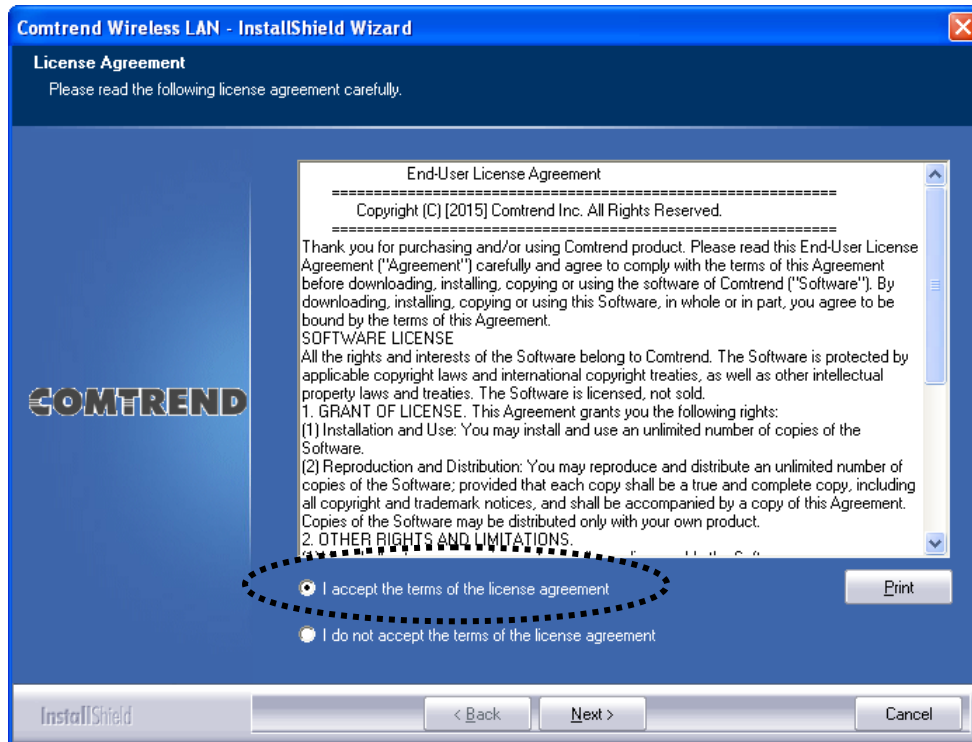
Please follow the instructions below to install your new wireless network card:

1. Insert the device driver CDROM into the CD/DVD ROM drive of your computer, and execute the 'autorun.exe' program. Then, choose the option to install the Driver in the menu.

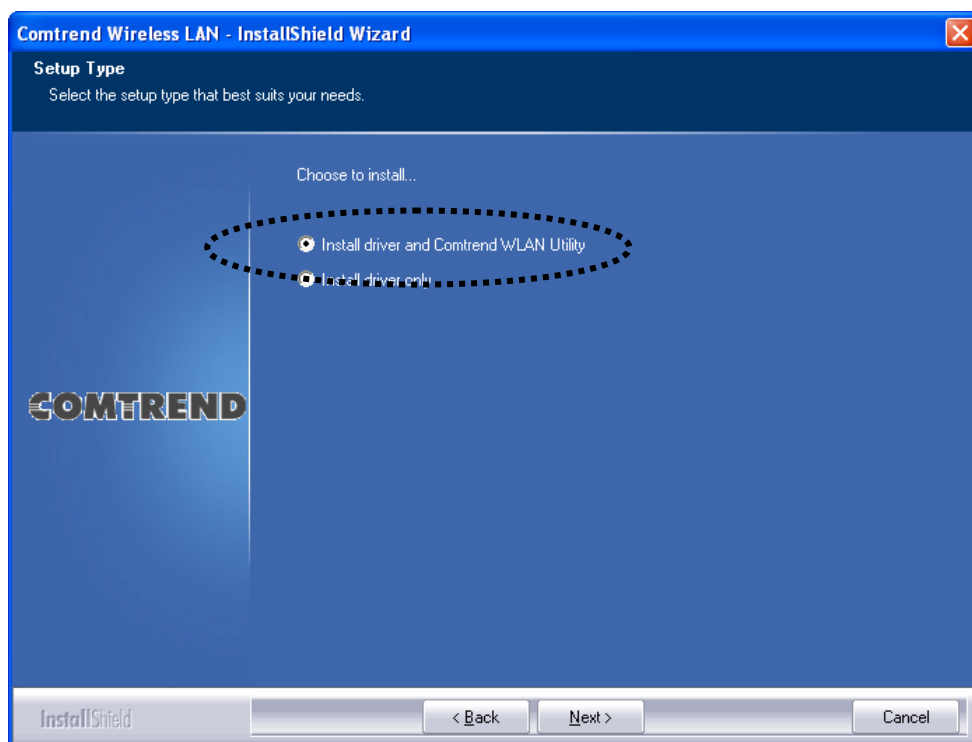
**Note:** On Windows 7 computers, you may see the UAC (User Account Control) window popup to warn you that this program is going to make changes to your computer, click the 'Yes' button to continue.



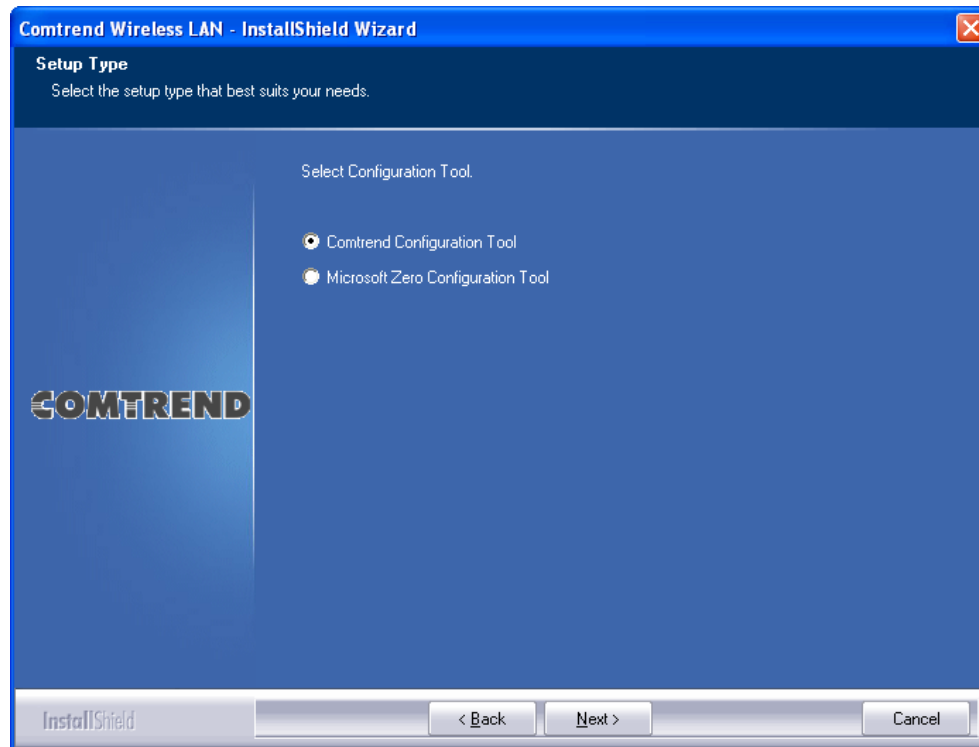
2. Select 'I accept the terms of the license agreement', and then click the 'Next' button.



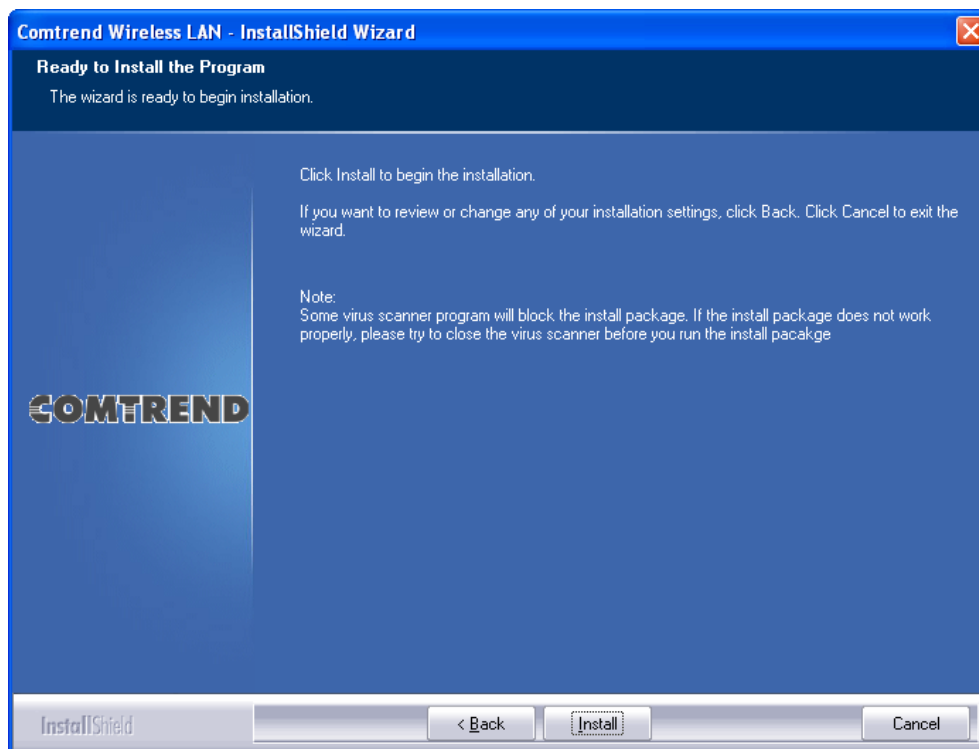
3. Choose 'Install driver and Comtrend WLAN Utility' then click the 'Next' button.



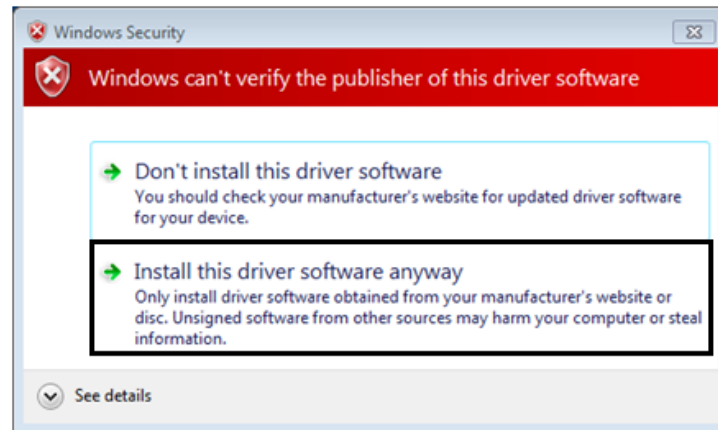
With Windows XP operating system an extra step will show like below.  
Click the 'Next' button to continue.



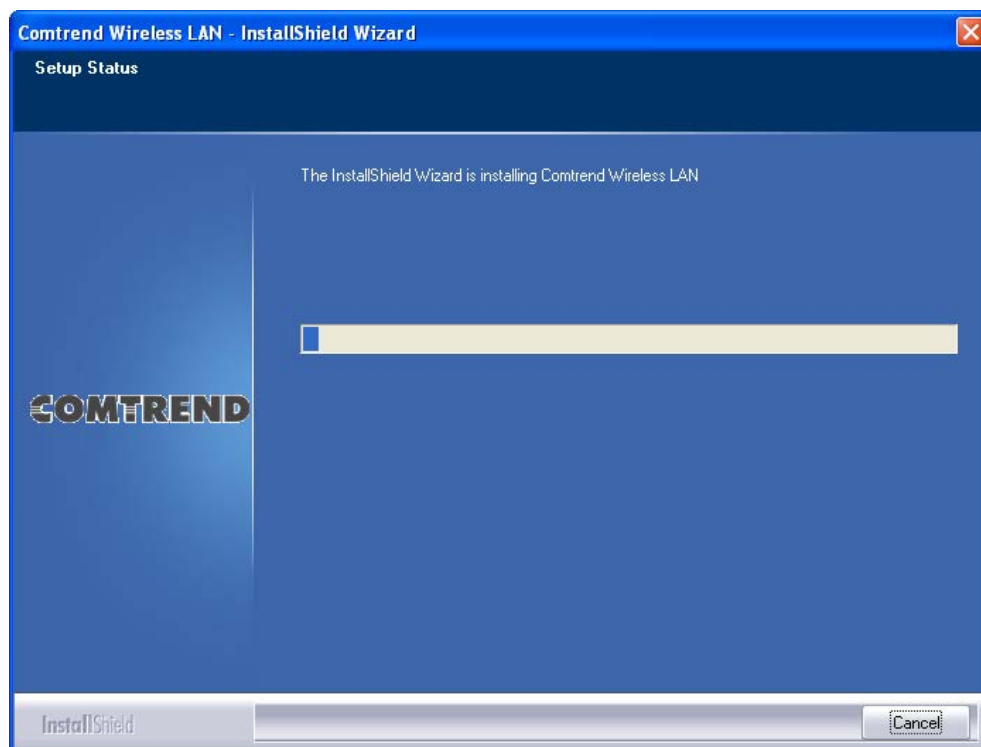
4. Click 'Install' to continue.



Please note: If you see this message, click 'Install this driver software anyway' to continue.

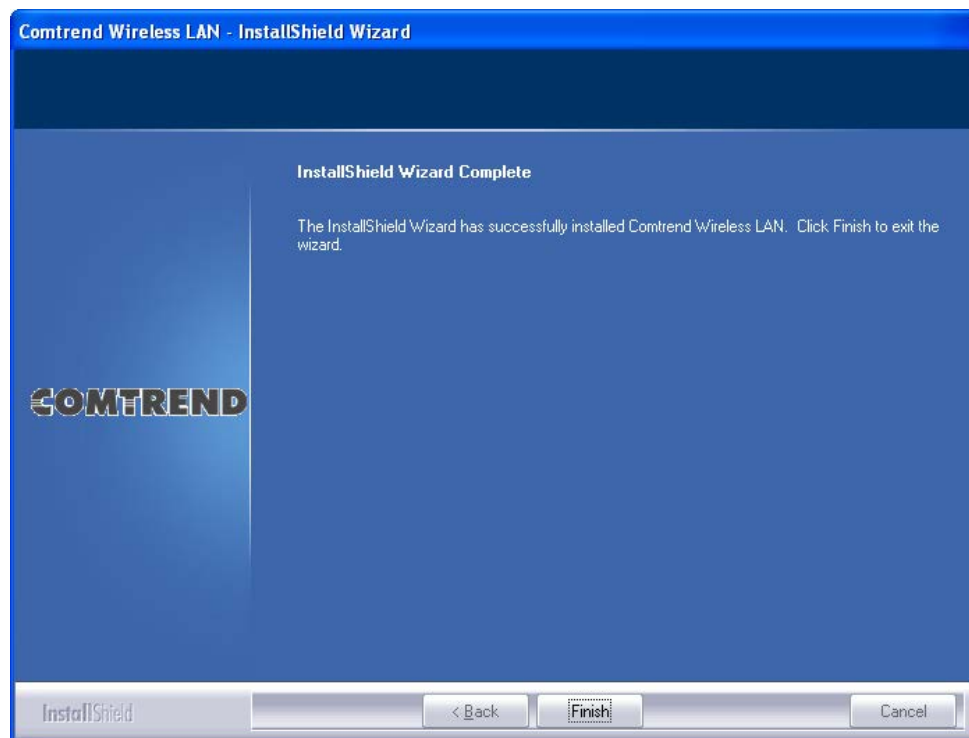


5. Please be patient while installation is in progress, this may require few minutes.

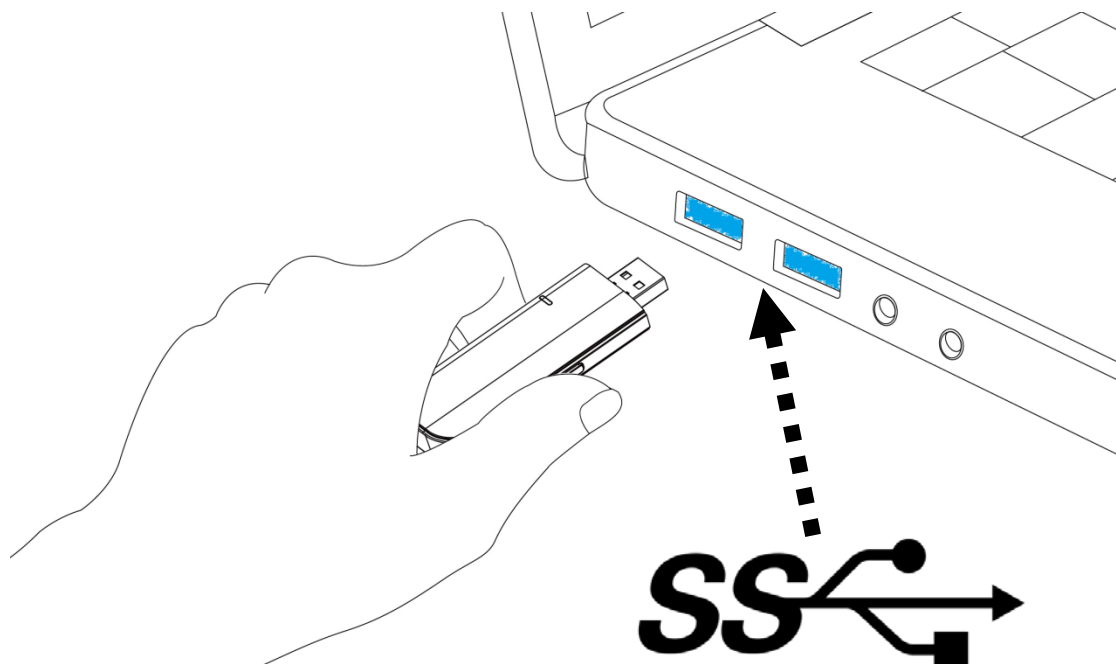




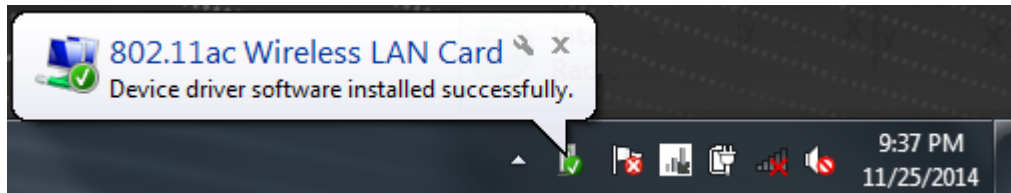
6. Click 'Finish' to complete the installation procedure.



7. Insert the USB wireless network card into an empty **Super Speed USB 3.0** port of your computer after the computer is powered on. Never use force to insert the card, if you feel it's stuck, flip the card over and try again.

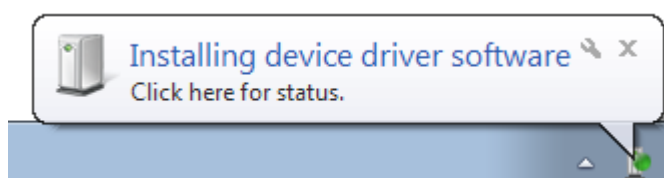


8. Insert your USB wifi network card into any empty USB port. A popup message indicating that your computer found an '802.11ac USB Wireless LAN Card' will appear. Please be patient while Windows is installing the driver.



This message will only appear when you insert the USB wifi network card into your computer's USB port.

9. You should be able to see this popup message, indicating your new USB network is ready to use; If not, please either try to re-install the driver, or insert the network card into another USB port of your computer.



(Windows 7)



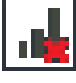

10. A new icon will appear near the clock of the system tray:



**HERE!**

Left-click the icon to launch the wireless network configuration utility, and you can right-click the icon to view the quick menu of the configuration utility.

This icon uses 5 colors to represent the current network status:

 (Green)	Network connection established, signal strength good.
 (Yellow)	Network connection established, signal strength normal or poor.
 (Red)	Network connection is not yet established.
 (Black)	Network card not found on your computer.

For detailed information about the wireless network configuration utility, please refer to the next chapter.

## 2-2 Connect to a Wireless Access Point

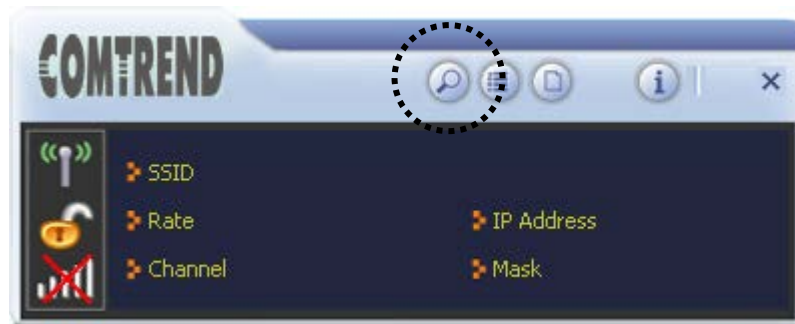
To use a wireless network, you need to connect to a wireless access point first. Please follow the instructions below to use the Comtrend configuration utility to connect to a wireless access point.


1. Left-click the Comtrend configuration utility icon located at the lower-right corner of your computer's desktop, and the configuration menu will appear:

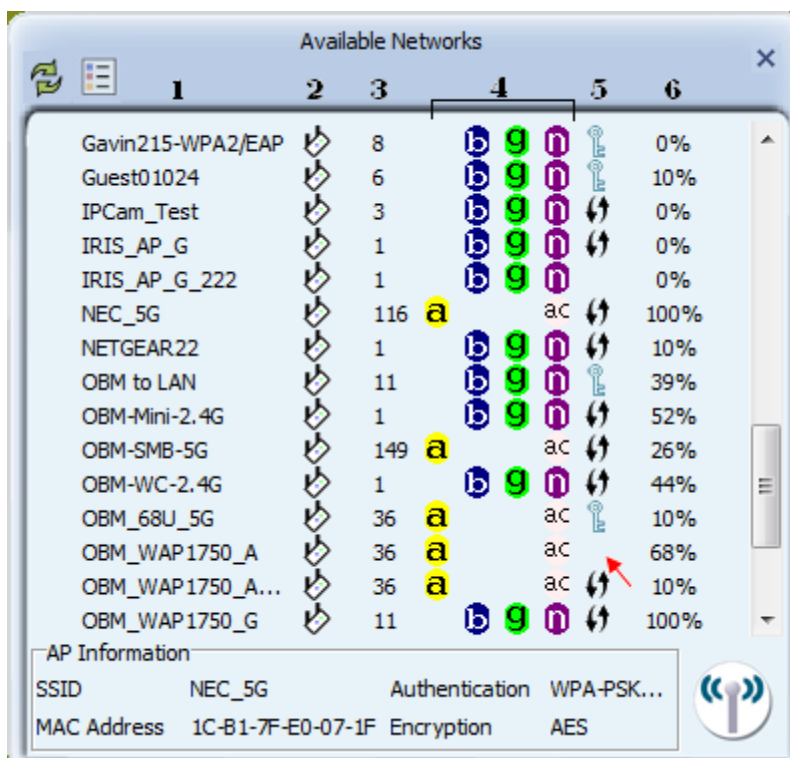


**HERE!**








2. The Comtrend wireless utility will appear.





Click the 'Site Survey'  button to open the list of available wireless networks (and their status).

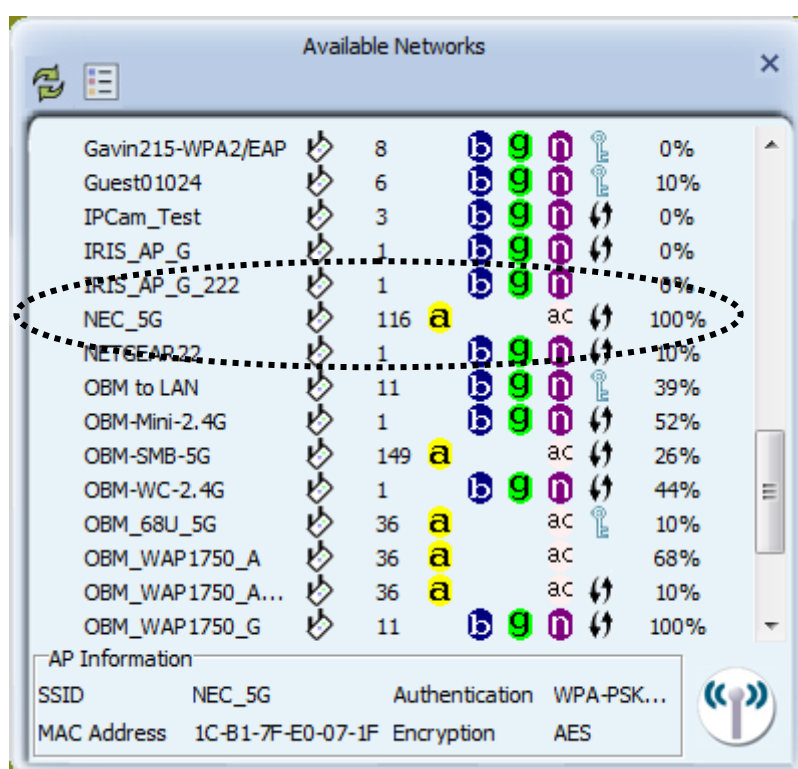



There are 6 fields in the 'Site Survey' list:

Field#	Description
1 (SSID)	The Service-Set IDentifier of the network device (The name of network device)
2 (Type)	The type of network device  Infrastructure (Access Point)  Ad-Hoc
3 (Channel)	The channel number of this network device
4 (Wireless mode)	Available wireless modes  802.11a wireless capability  802.11b wireless capability  802.11g wireless capability  802.11n wireless capability  802.11ac wireless capability

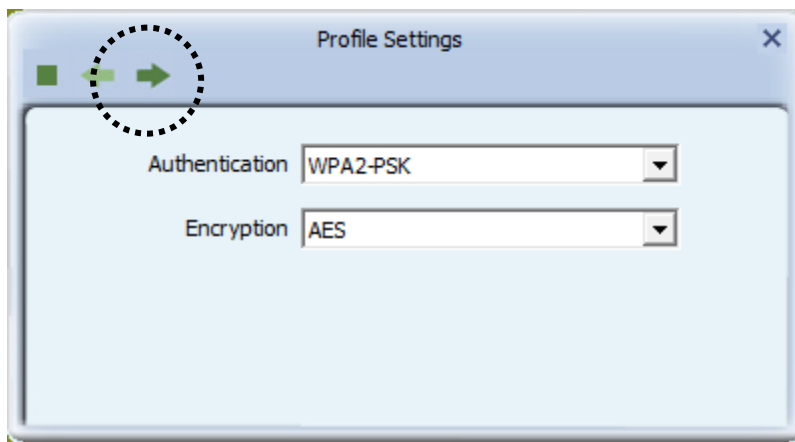
5 (Security)	Security mode. When nothing is displayed here (as we have indicated by the red arrow above), it means this network device does not require security and anyone can connect to it. The  icon indicates that a security password is required. The  icon indicates that WPS connection is possible.
6 (Signal Strength)	Shows the wireless signal strength as a percentage. The higher the percentage means the better the signal quality.

3. To connect to a wireless access point, double click on it:

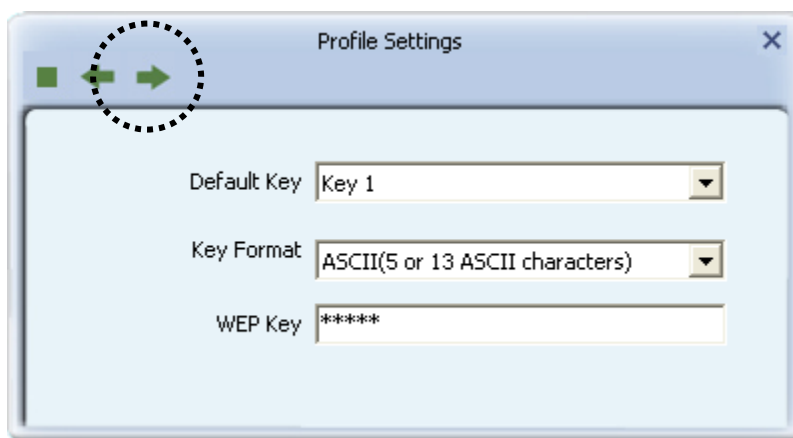


4. If the wireless access point you wish to connect to does not appear here, you can click the 'Refresh'  button to scan for wireless access points again; if the wireless access point you're looking for still doesn't appear, try to move the computer closer.

5. You'll be prompted with the wireless access point's encryption method (if any):
6. Click the right arrow to continue. Generally you don't have to change the encryption method, it will be detected automatically. If you selected a wrong encryption method, you will not be able to establish a connection.

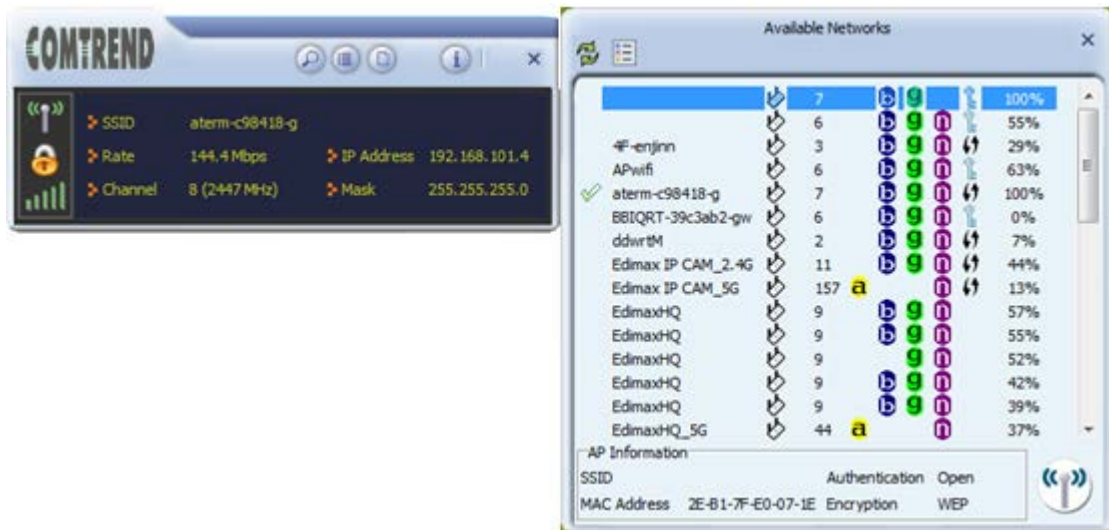


7. Input the encryption key (or passphrase, depending on the encryption method) here, then click the right arrow.



8. The USB adapter will attempt to connect to the access point, this may require few seconds to minutes, please be patient. When you see there's a check shown beside the access point you wish to connect to, your computer is connected to the access point you selected. The connection status will be displayed in the configuration utility also.

(See example picture below).






## 2-3 Profile Settings

For connections you'll frequently use, you can save them as a profile and you can recall all settings (security type, password, etc.) when required.


### 2-3-1 Add a new profile

Using this function you can setup the connection parameters for a specific wireless access point in advance, so you can recall a set of connection parameters quickly.

To do this, follow the procedures below:

1. Click 'Profile'  in the configuration utility:

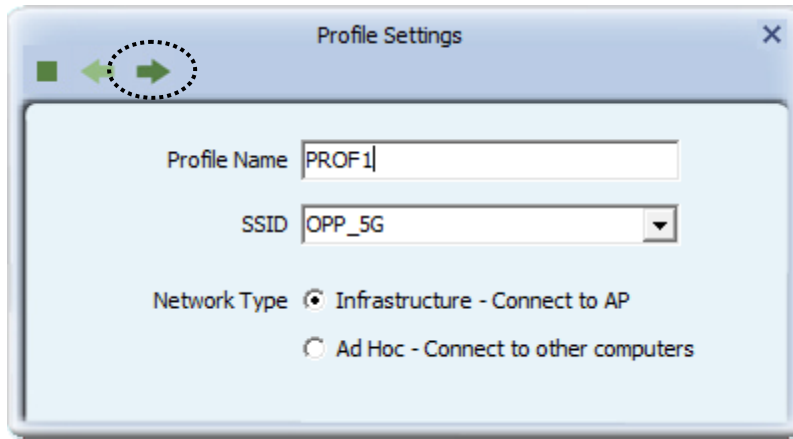


2. The profile manager will appear. Click the plus sign  to add a new profile.

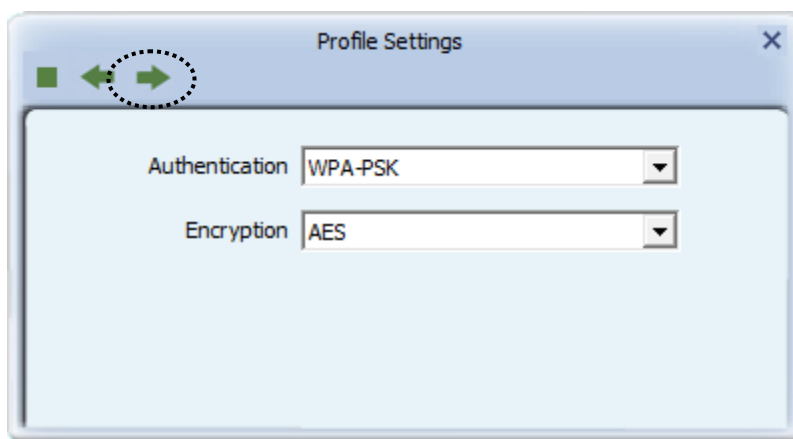


3. Give a name to the profile in the 'Profile Name' field, and select the AP you wish to connect to in the 'SSID' dropdown list, then click the right arrow ➡.

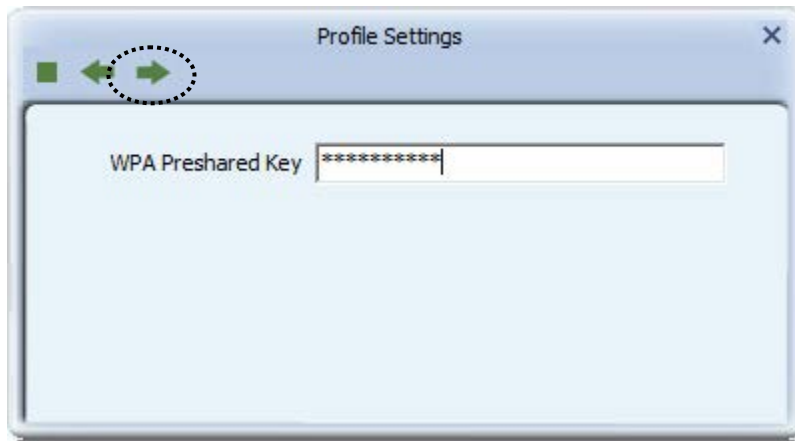
If you're connecting to a network device using an AD-HOC connection method, select 'Ad Hoc - Connect to other computers' first.



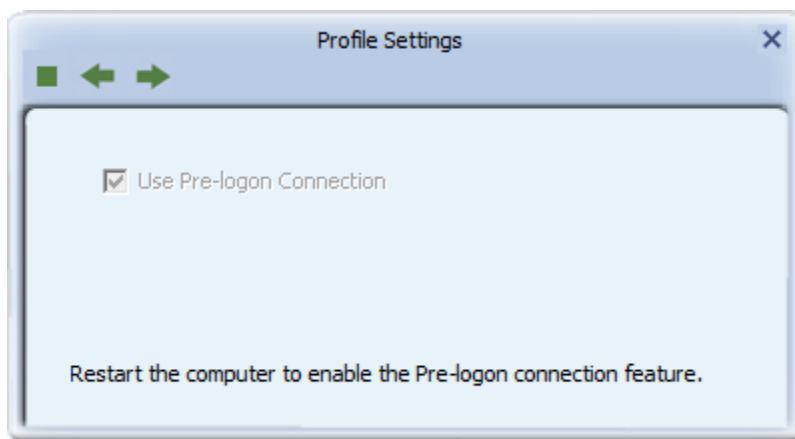
4. Select this AP's authentication and encryption method from the dropdown list, then click the right arrow ➡.



5. Input the passphrase key here (or WEP key, if required), then click the right arrow ➡:



6. Check this box if you wish to enable pre-logon connection. When this feature is enabled, the wireless network connection will be established before you logon to Windows so you can authenticate yourself against network server. If you don't need this, you can leave this box unchecked. Click the right arrow ➡ to continue.




7. The profile will be saved in the list:

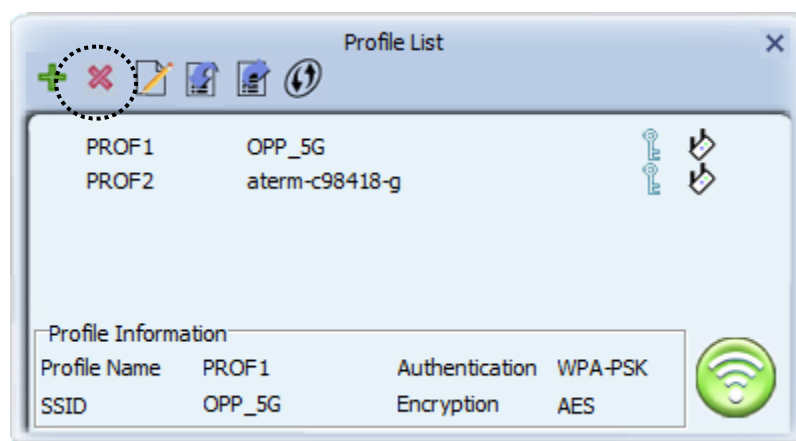


You can repeat step 2 to 6 to setup more profiles of wireless connections. When you wish to connect to a certain wireless access point, click the 'Active' button (as indicated above).

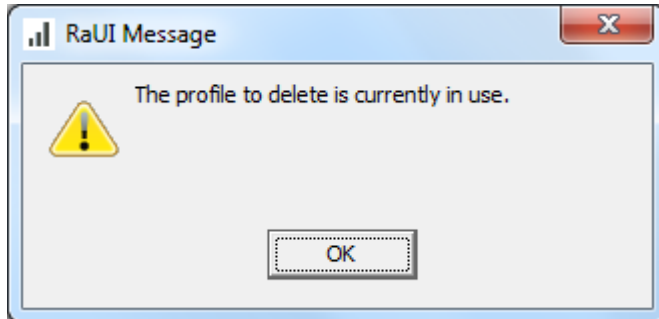
A check mark  will be displayed beside an active profile.


### 2-3-2 Remove an existing profile

When you no longer need an existing profile, just select it from the list and click the 'Delete'  button.




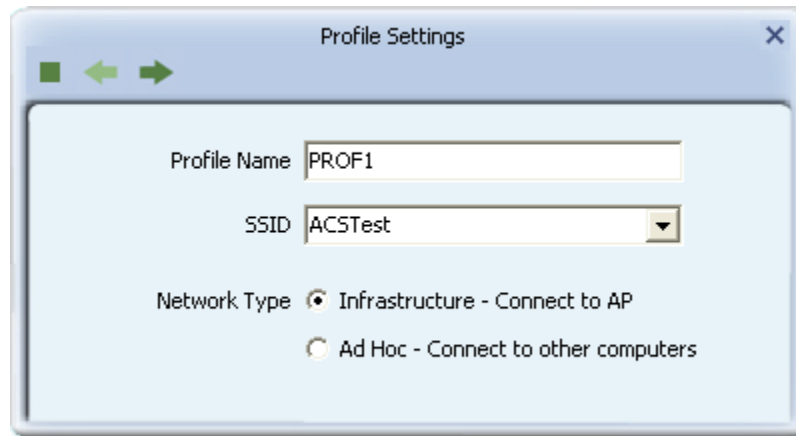
If the profile you wish to delete is active now, you'll be prompted to confirm the deletion:



To delete anyway, click 'OK'; to cancel, click the  mark.

### 2-3-3 Edit an existing profile


If you have added a profile before, and you wish to change the content of the profile, you can use this function. Select a profile from the list first, then click the 'Edit'  button.

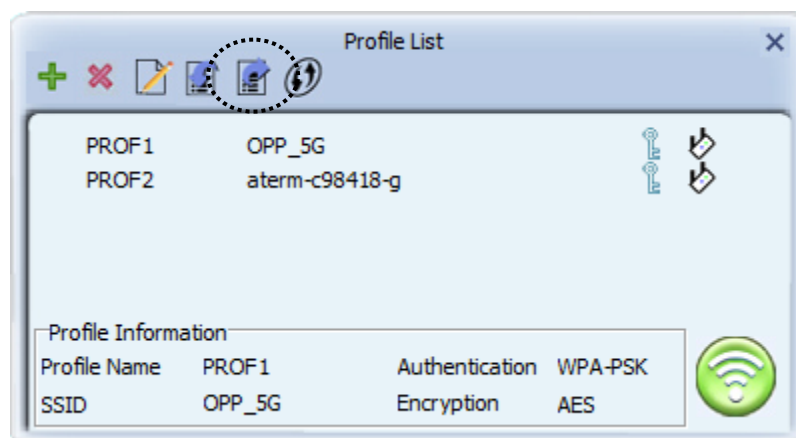


You'll be provided with the contents of the selected profile; you can edit them and save the changes.

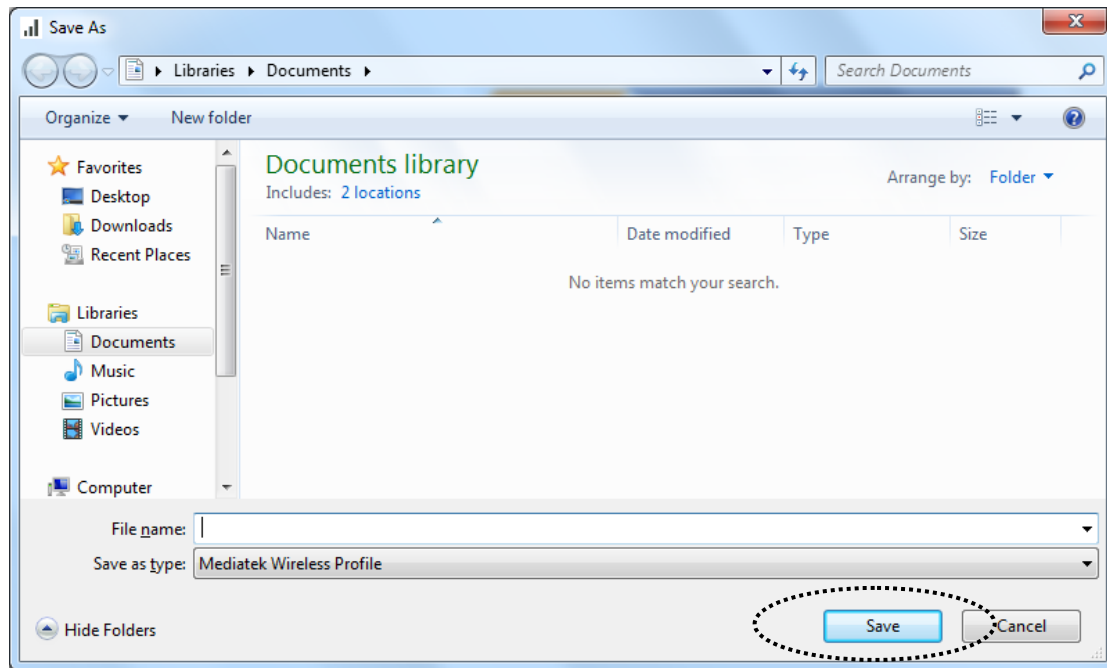
### 2-3-4 Import / Export profile


If you need to move your wireless settings to another computer, or you just want to make a backup, you can use the import / export function to make a copy, or restore the current profile.

To backup a profile, click 'Export' :



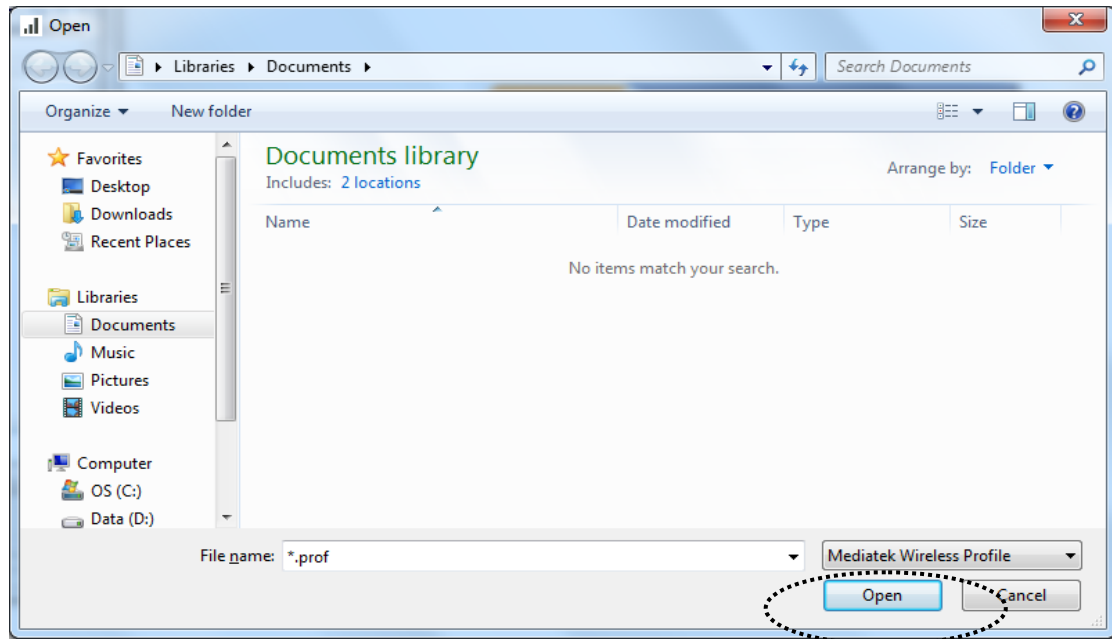
You'll be prompted to select a place to save the profile setting file. Select a folder in your computer and name the profile, then click 'Save'.



To recall previously-saved profiles, click 'Import'  :



Select a profile (file with .prof extension), and click 'Open'. Please note that this will overwrite any existing profile(s).

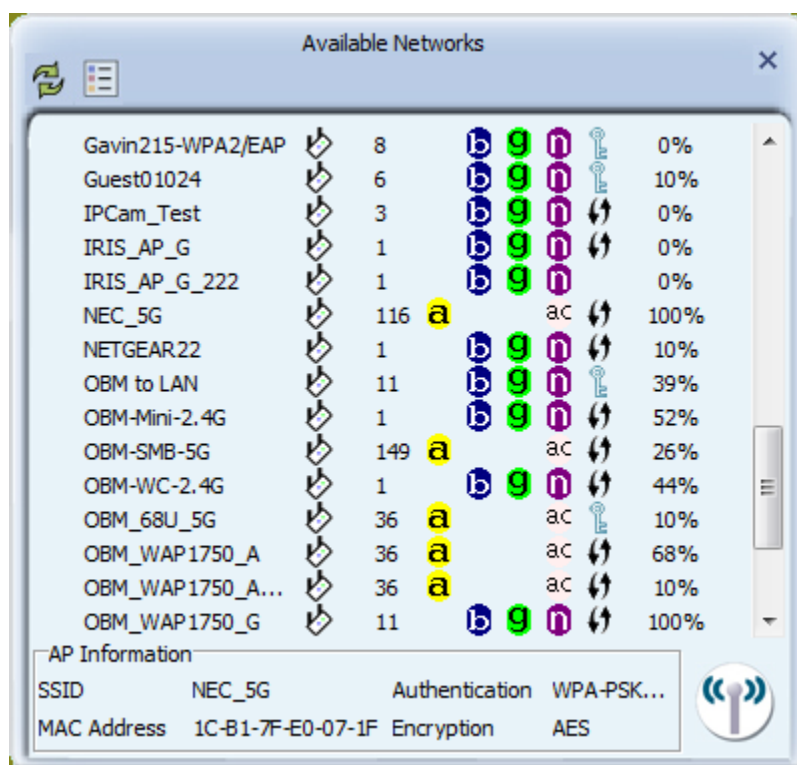



### 2-3-5 WPS Profile Setup


WPS (Wi-Fi Protected Setup) is a new, convenient way to setup secured wireless connections. You only need to push a button or input a set of 8-digit random numbers, and you can setup a secure connection between wireless devices.

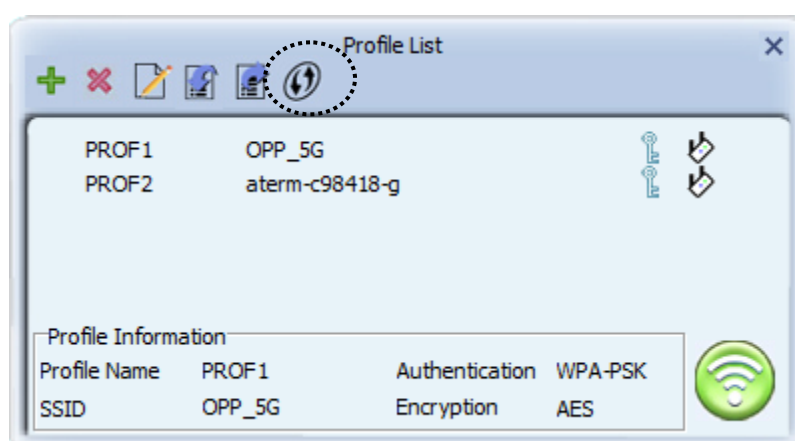
To use WPS profile, you need to make sure the access point you wish to connect supports WPS first. You can discover if an access point is WPS-capable or not by site-survey:



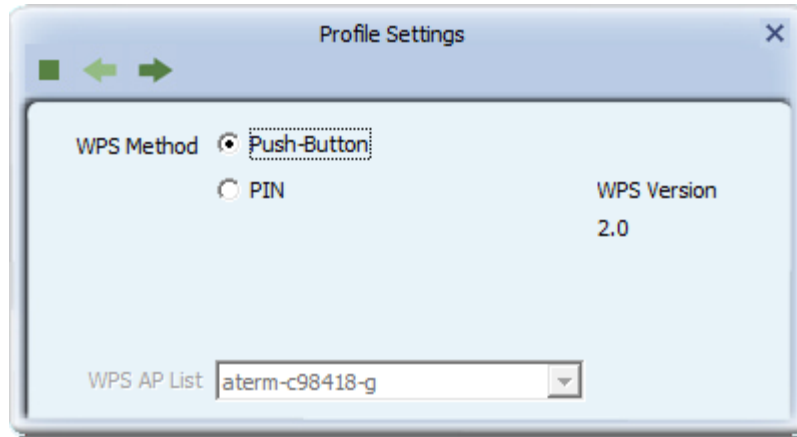


In this list, there are ten access points that support WPS, which are indicated by the  icon.

You can still establish a secured connection with WPS-capable access points in a conventional way. To establish WPS-style connection, click the 'Add WPS profile'  button:



You'll be prompted to select the WPS method and WPS AP:



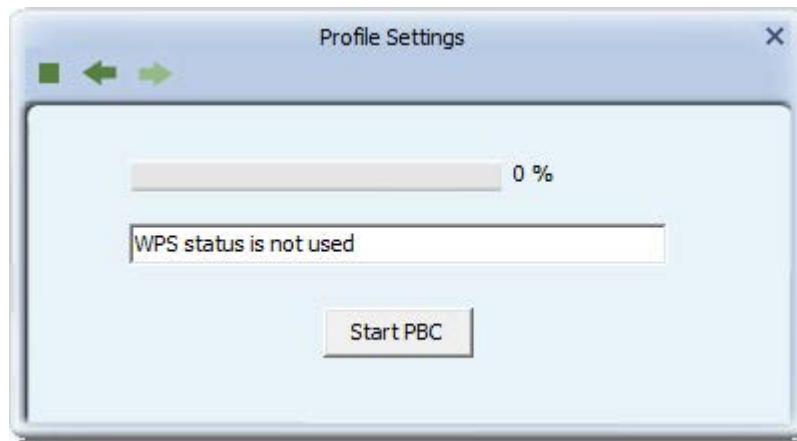
To use PIN (8-digit or 4-digit random number) to setup WPS, select 'PIN', and you need to select an AP from the 'WPS AP List' dropdown menu; to establish connection by Push-Button Configuration (PBC), you don't have to select an AP from the 'WPS AP List' dropdown list.

***Note: This device follows WPS 2.0 Standard Specification to allow inputting of a 4-digit PIN code, make sure your Wireless Router or Access Point supports WPS 2.0 accordingly, or use an 8-digit PIN as usual.***

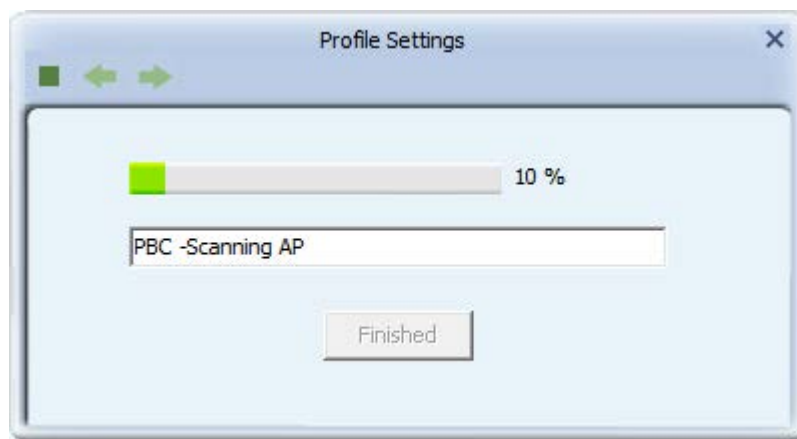
Click the right arrow  to continue.

### 2-3-5-1 PBC mode WPS configuration

When you want to use 'PBC' mode:




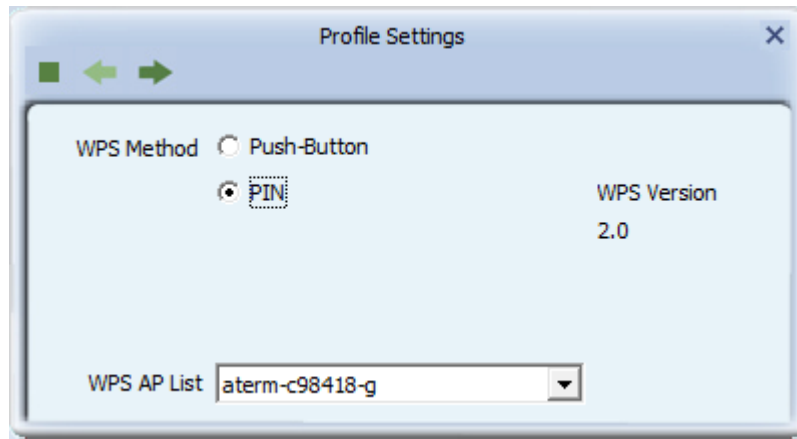
Click the 'Start PBC' button:



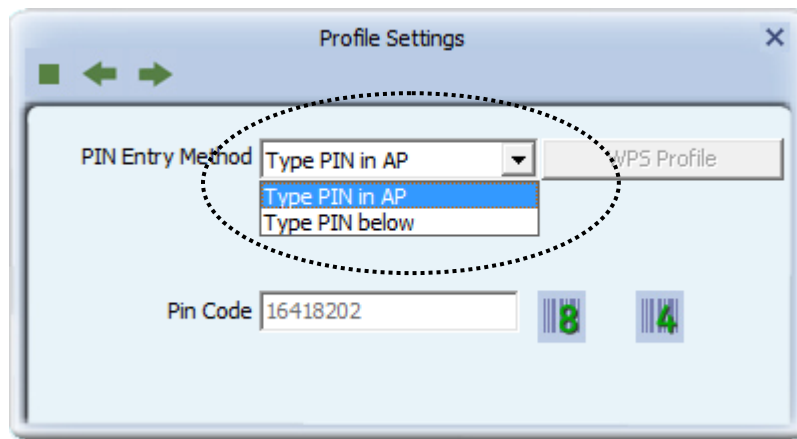
Now, please push the WPS button on the access point (a physical button or a software button in its configuration menu - please refer to the access point's user manual) within 2 minutes.

### 2-3-5-2 PIN mode WPS configuration

To setup WPS connection by PIN, select 'PIN', then click the right  arrow.



There are two methods in PIN mode WPS configuration: 'Type PIN in AP' and 'Type PIN below'. 'Type PIN in AP' is the one that searches for WPS registrar and will attempt to connect it and 'Type PIN below' is the one that waits for an incoming WPS request.

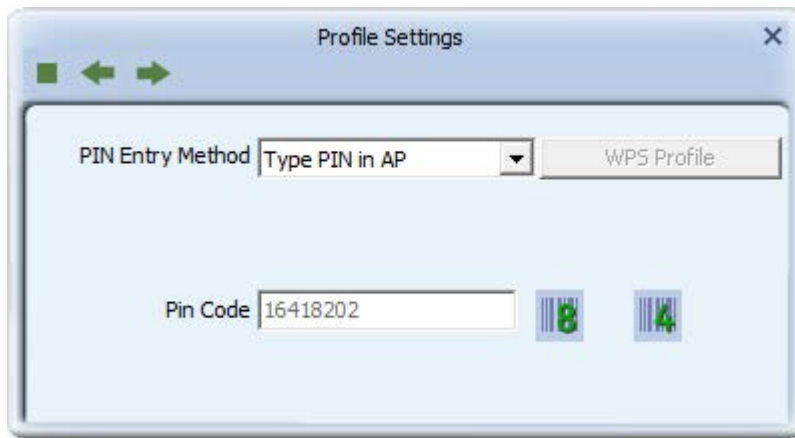



The WPS role of two devices should not be same: when one device is registrar, the other one must be enrollee, and vice versa.

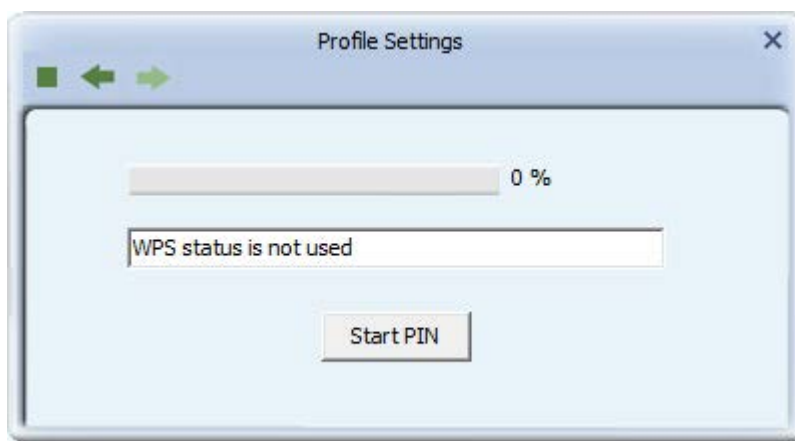
There will be a menu displaying 2 kinds of method on the configuration menu,

## 1. Type PIN in AP

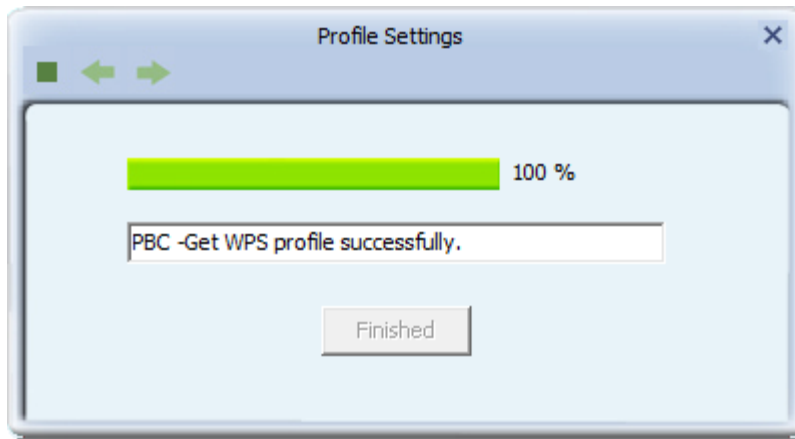
Select 'Type PIN in AP' in the 'PIN Entry Method' dropdown list. There will be a menu displaying an 8-digit WPS PIN code on the configuration menu.



Remember the number and input PIN code in the web page of the router/AP in a short period of time (2 minutes or so), then click the right  arrow.

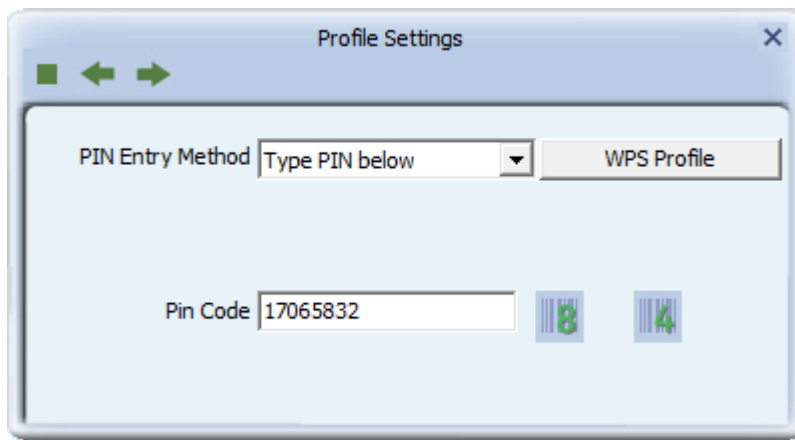


Click 'Start PIN' to begin WPS connection, please be patient. You'll be prompted when the WPS connection is established successfully; if you received an error, you can try again, but please remember to make sure the PIN you obtained from the access point is still valid.




## 2. Type PIN below

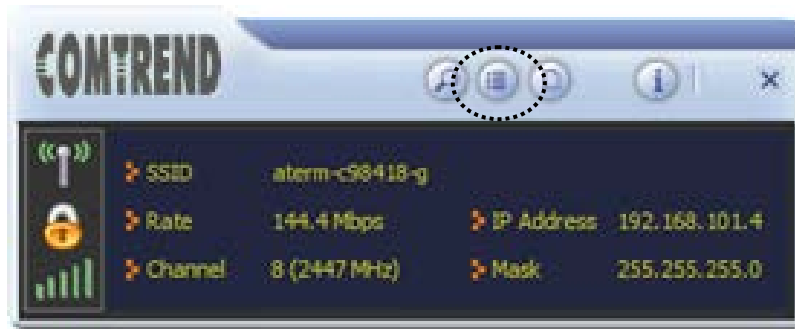
Select 'Type PIN below' in the 'Config mode' dropdown list, and input the PIN code in 'Pin Code', then click the right ➡ arrow.



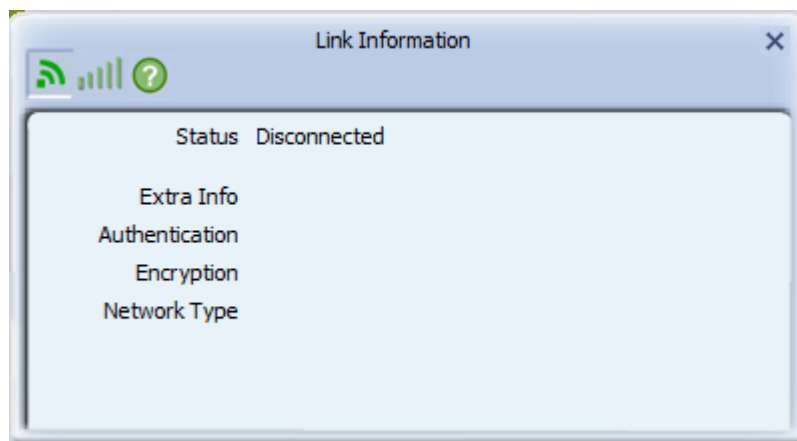
Please be patient. You'll be prompted when the WPS connection is established successfully.

## 2-4 Link Information

You can check the status of the active wireless connection by clicking the 'Link Information'  button:



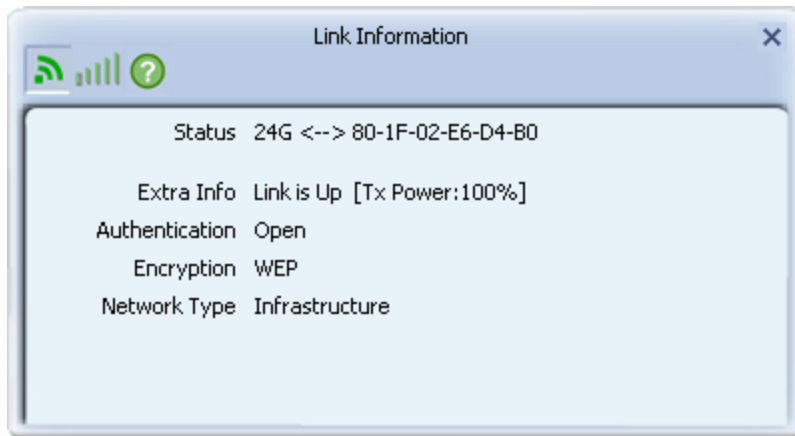
A new window will appear:



There are 3 kinds of link information:

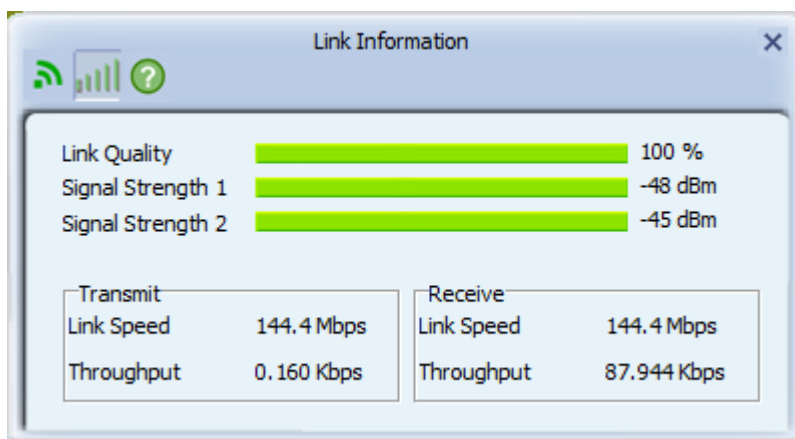
1. Link status 

Displays the status of the active connection.



## 2. Throughput

Displays the throughput of the active connection.

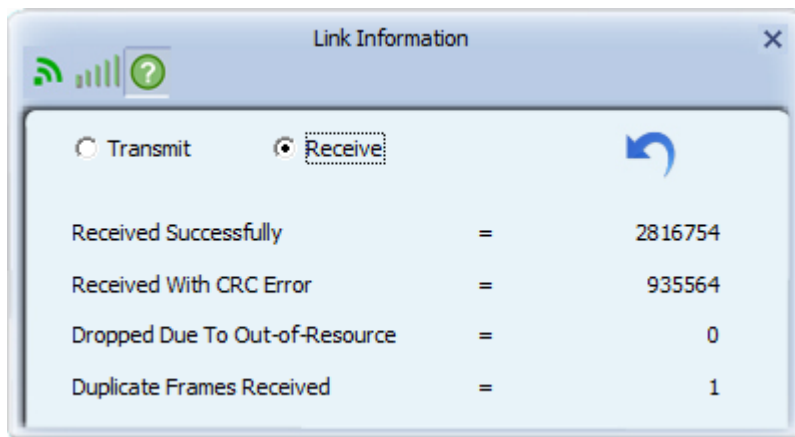
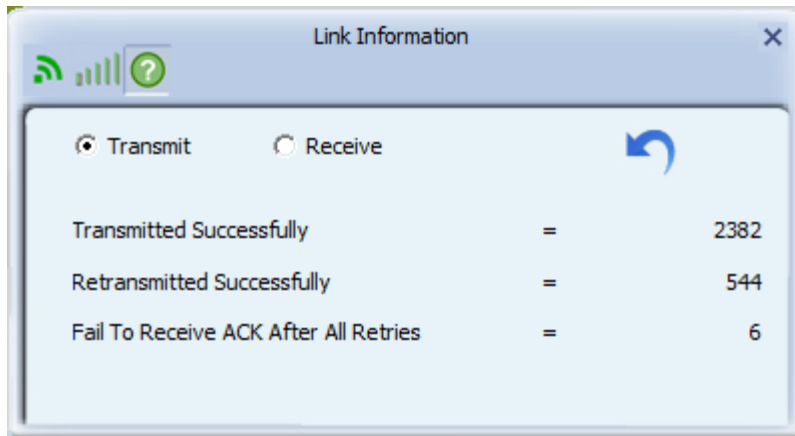


## 3. Statistics

Displays the statistics of the active connection. Select 'Transmit' or 'Receive' to switch displaying statistics of the transmitted and received data packets.

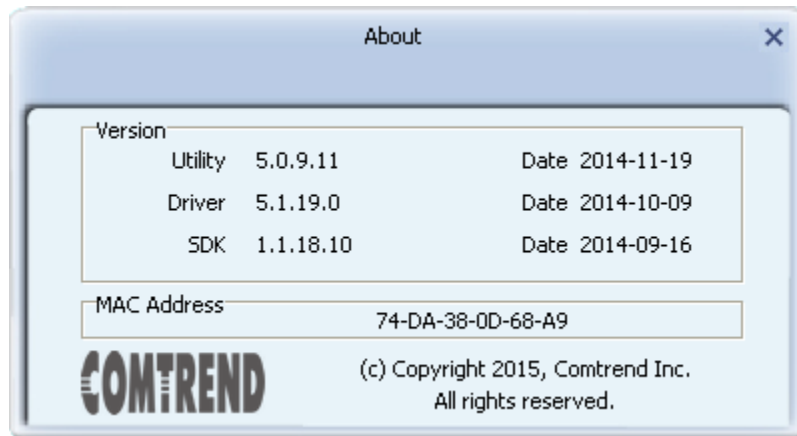
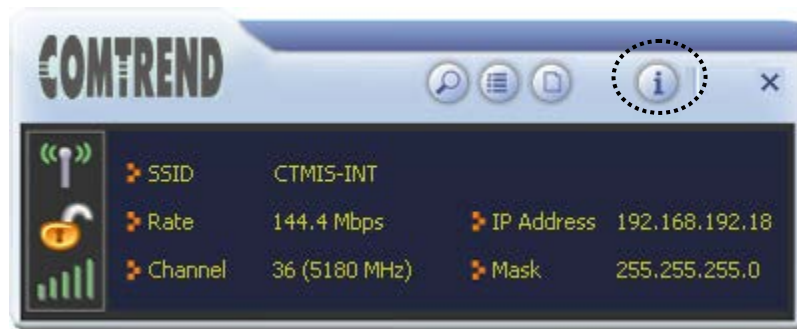
To reset counters, click 





## 2-5 About

Click this button to see the version information of the utility.



Click on the icon above to Enable/Disable WiFi.

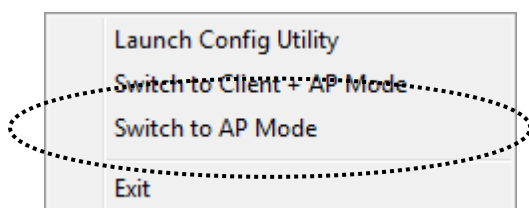
## CHAPTER 3 Soft-AP Function

Apart from becoming a wireless client of other wireless access points, this wireless card can act as a wireless service provider also! You can switch this wireless card's operating mode to 'AP' mode to simulate the function of a real wireless access point via software, and all other computers and wireless devices can connect to your computer wirelessly, even share the Internet connection you have!

Follow the instructions below to use the AP function of your wireless card.

### 3-1 Switch to AP Mode

The operating mode of the wireless card is 'Station Mode' (becoming a client of other wireless access points) by default. If you want to switch to AP mode, please right-click the configuration utility icon, and click 'Switch to AP Mode'.



You'll see the configuration utility's icon switched to an 'AP' icon.




To launch the AP manager, right-click the configuration utility's icon, and select 'Open Utility'.

The soft-AP configuration utility will appear, along with the status of the software AP:



## 3-2 Configure AP

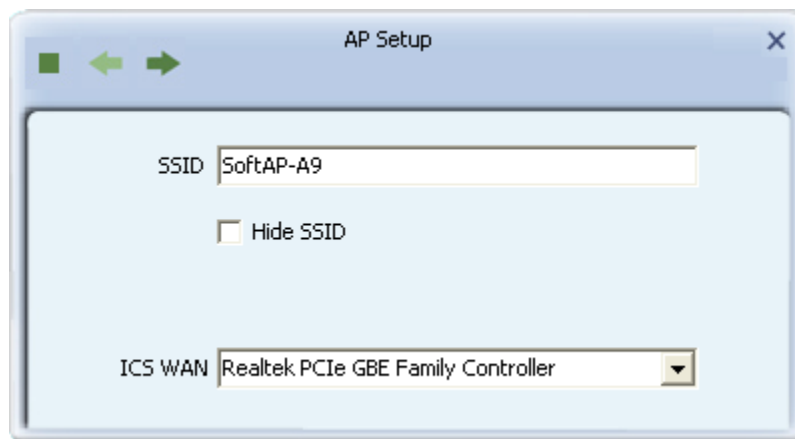
To use the software AP, you need to configure it first, to accept incoming wireless connections. Click the 'Config AP'  button to continue.



You need to input the SSID of this software AP first:

### 1. AP Setup

Input the SSID in the 'SSID' field. If you wish to hide the SSID, so only clients who know your actual SSID can get connected, check the 'Hide SSID' box.

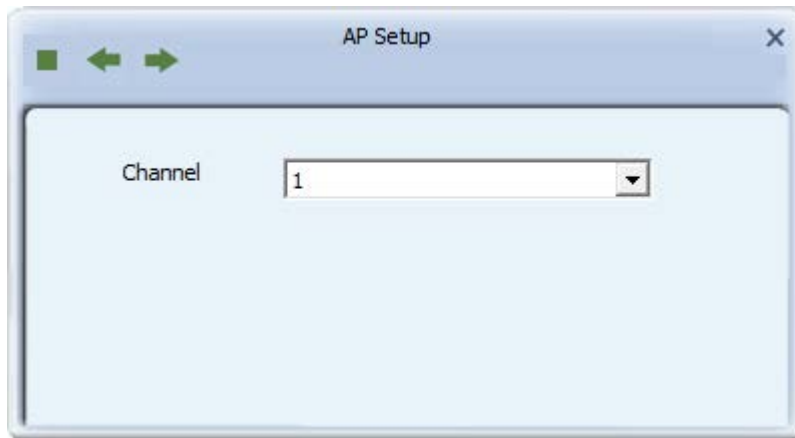


You can also change the WAN connection by the 'ICS WAN' dropdown menu.

When you finish, click the right arrow .

## 2. Channel Select

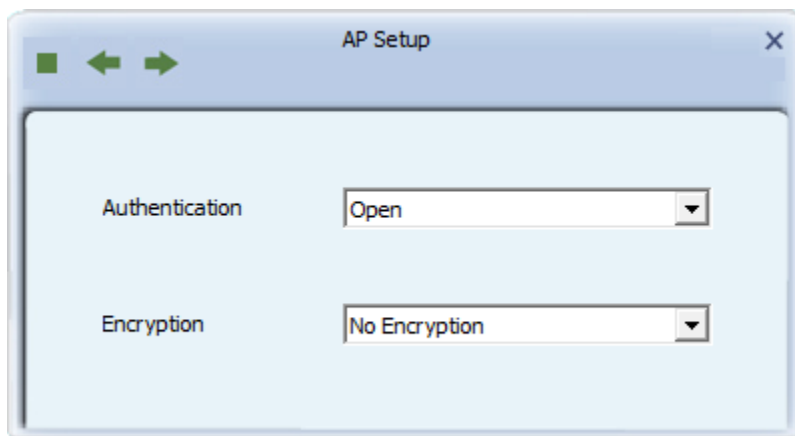
In this page, you can select a 2.4G or 5G wireless channel of this software AP. Select from the 'Channel' dropdown list.



When you finish, click the right arrow .

## 3. Wireless Security

In this page, you need to select the authentication and encryption method of this software AP.



Available 'Authentication' options are:

Open: No security. Anyone who found this AP can get connected.  
WPA-PSK: Use WPA-PSK authentication.  
WPA2-PSK: Use WPA2-PSK authentication.  
WPA-PSK / WPA2-PSK: Allows both WPA-PSK and WPA2-PSK authentication.

Available 'Encryption' options are:

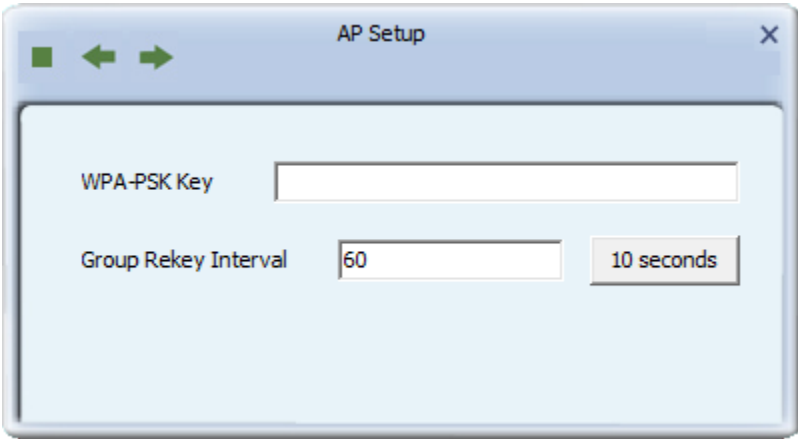
No Encryption: No security.

AES: Use AES encryption.

When you finish, click the right arrow ➡.

#### 4. Authentication Type

In this page, you can configure the wireless authentication type.




The image shows a window titled "AP Setup" with a close button (X) in the top right corner. Inside the window, there are two main configuration fields. The first is labeled "WPA-PSK Key" and has an empty text input box next to it. The second is labeled "Group Rekey Interval" and has a text input box containing the number "60". To the right of this input box is a button labeled "10 seconds". At the top left of the window, there are navigation controls: a small square icon, a left-pointing arrow, and a right-pointing arrow.

Input the WPA-PSK or WPA2-PSK or WPA-PSK/WPA2-PSK key here. If you wish to change the group rekey time interval, you can also change it here, but normally you don't need to change it and the software AP will still work fine. Please note that the encryption key must be 8 to 63 ASCII characters or 64 Hex characters.

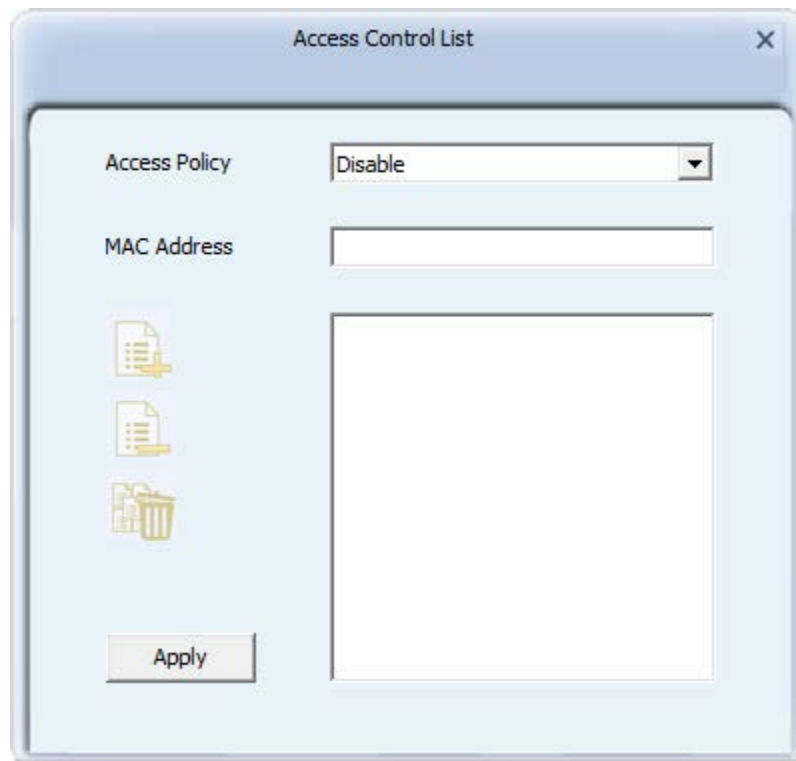
When you finish, click the right arrow ➡. After you finish this step, your software AP is ready and able to accept incoming connection requests.

### 3-3 Access Control

You can allow or disallow certain wireless clients to connect to your software AP using this function. To setup access control, click the 'Access Control List' button .



The access control list will appear:



First you need to select the access control policy:



Disable: No access controlling

Allow All: Only allow clients in the list to establish connection (white list).

Reject All: Rejects all clients in the list to establish connection (black list).

Then you need to input the 12-character MAC address in the 'MAC Address' field. You may find the MAC address of a certain USB adapter on itself (something like a label). Please note that you don't have to input : (colon) or - (dash) character between every 2 MAC address characters.

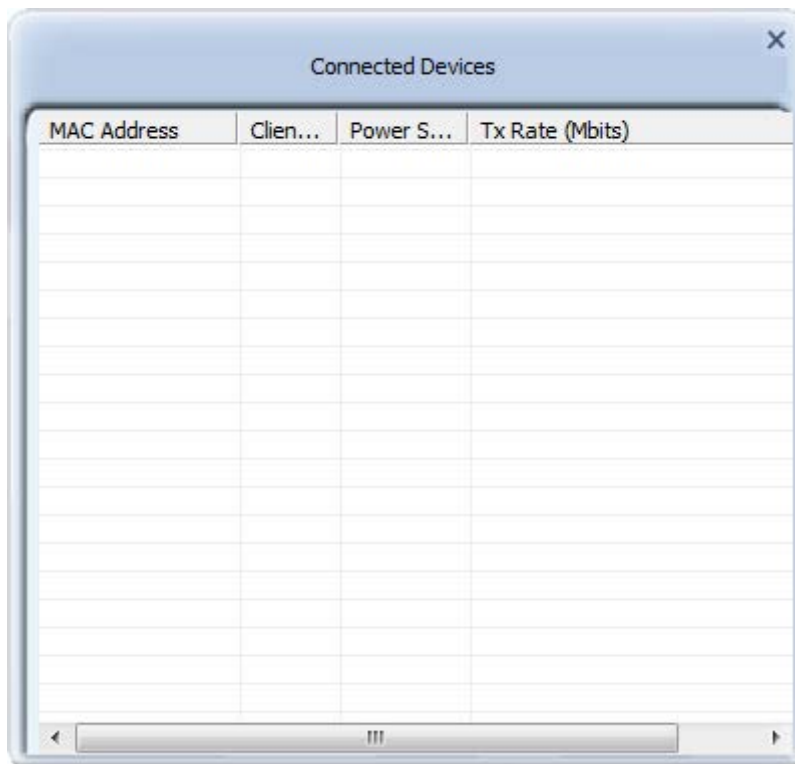
Click 'Add' to add this MAC address in the list.

To delete a MAC address in the list, select it and click the 'Delete' button; to delete all entries, click the 'Remove All' button.

Click the 'Apply' button to save changes.

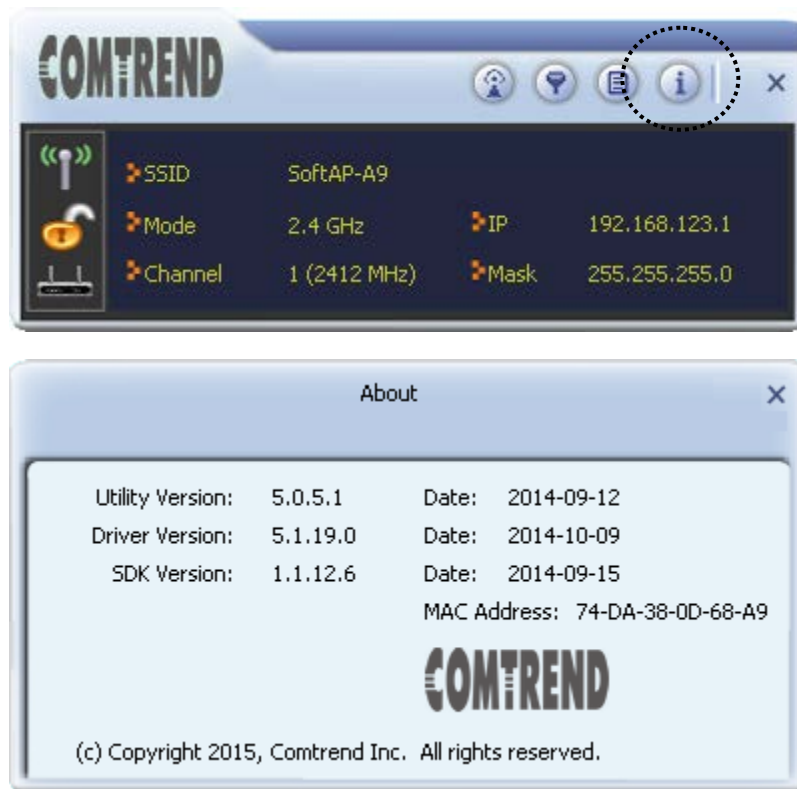
### 3-4 Associate List

You can see the list of all wireless clients that connected to this software AP. Click the 'Connected Devices' button to show the list.



### 3-5 About

Click this button to see the version information of the software AP configuration utility.



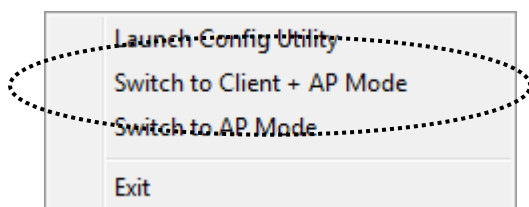
## CHAPTER 4 Client + AP Function

When ICS (Internet Connection Sharing) WAN is unavailable, this wireless card can connect to other APs and it can also work as a wireless service provider at the same time for other users to connect to.

Please see the instructions in following chapter to use the Client + AP function of your wireless card.

### 4-1 Switch to Client + AP Mode

The operating mode of the wireless card is 'Client Mode' (becoming a client of other wireless access points) by default. If you want to switch to Client + AP mode, please right-click configuration utility icon, and click 'Switch to Client + AP Mode'.

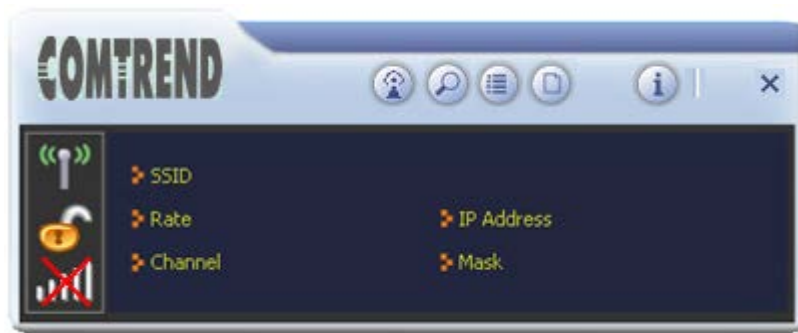


You'll see the configuration utility's icon switched to 'Client + AP' icon.

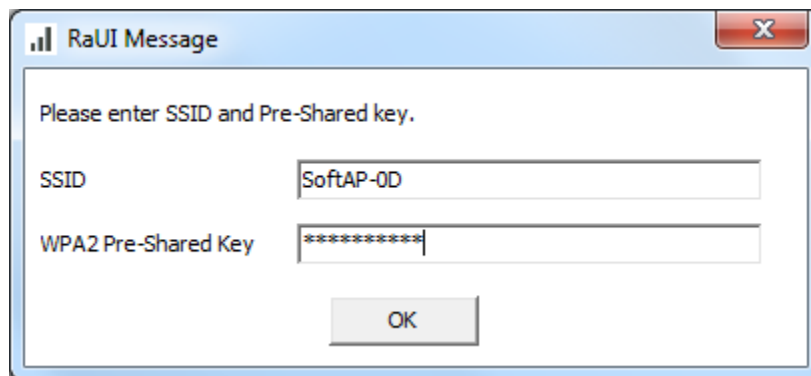


To launch AP manager, right-click the configuration utility's icon, and select 'Launch Config Utilities'.

The soft-AP configuration utility will appear, along with the status of the software AP:




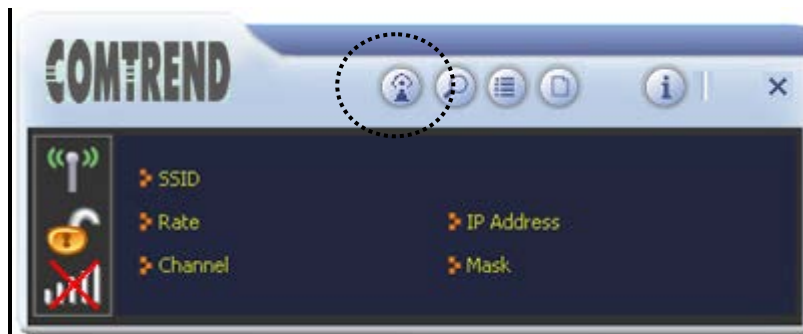
When you enable Client + AP mode for the first time, you need to input the SSID of this software AP first:

The image shows a 'RaUI Message' dialog box. It contains the text 'Please enter SSID and Pre-Shared key.' Below this, there are two input fields. The first field is labeled 'SSID' and contains the text 'SoftAP-0D'. The second field is labeled 'WPA2 Pre-Shared Key' and contains a series of asterisks. An 'OK' button is located at the bottom right of the dialog box.

Input the SSID in the 'SSID' field and Input the encryption key here. When you finish, click ok.

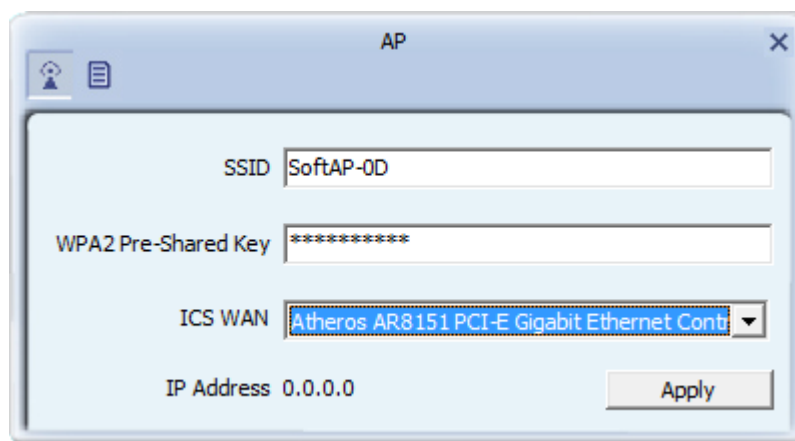
## 4-2 Configure AP

To use software AP, you need to configure it first to accept incoming wireless connections. Click the 'Config AP'  button to continue.



### 1. AP Configuration

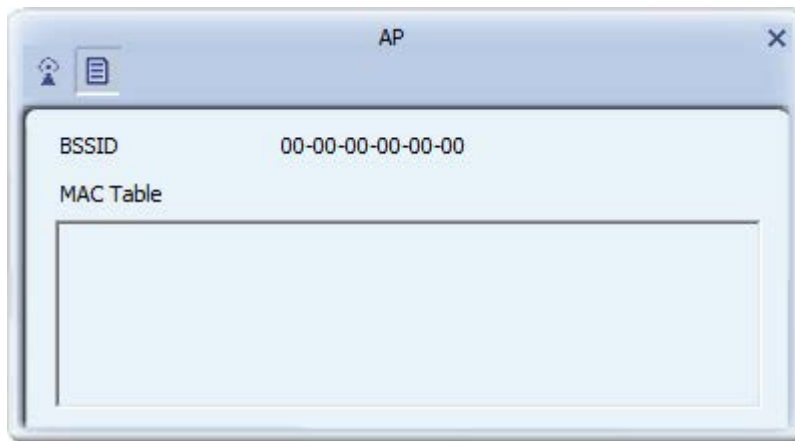
Input the SSID in the 'SSID' field and Input the encryption key here.



You can also change the WAN connection by using the 'ICS WAN' dropdown menu. When you finish, click the 'Apply' button.

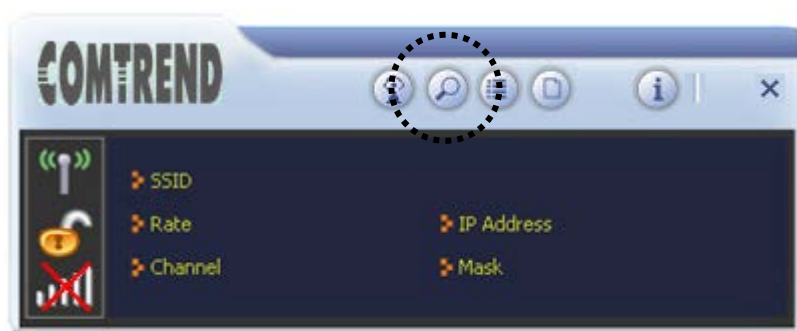
## 2. MAC Table


In this page, the MAC addresses of all connected clients will be displayed here.

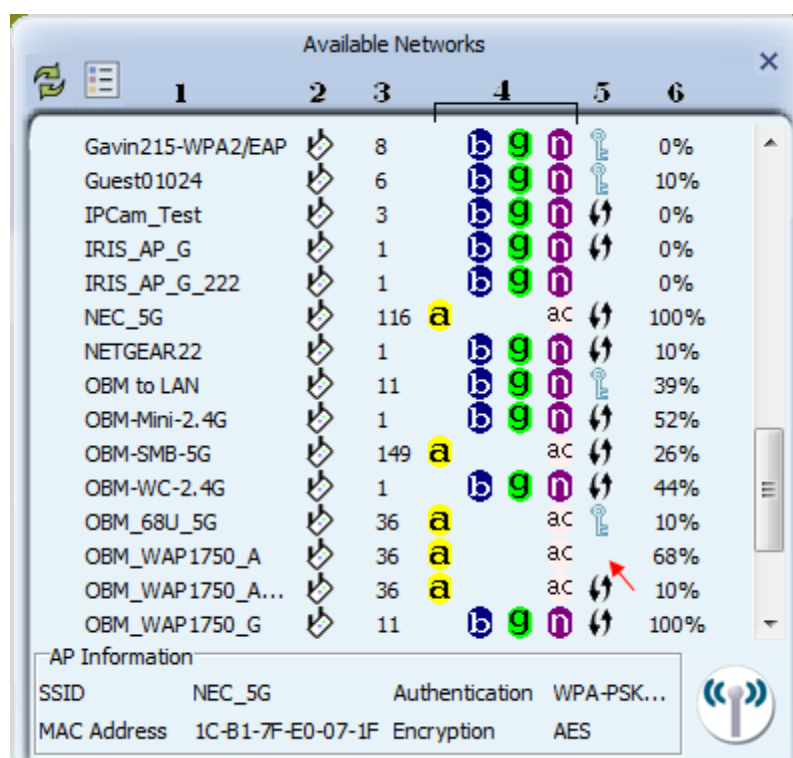


### 4-3 Available Networks

To use the wireless network, you need to connect to a wireless access point first. Please follow the instructions below to use the Comtrend configuration utility to connect to a wireless access point.







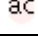




Click the ‘Site Survey’  button to open the list of available wireless networks (and their status).




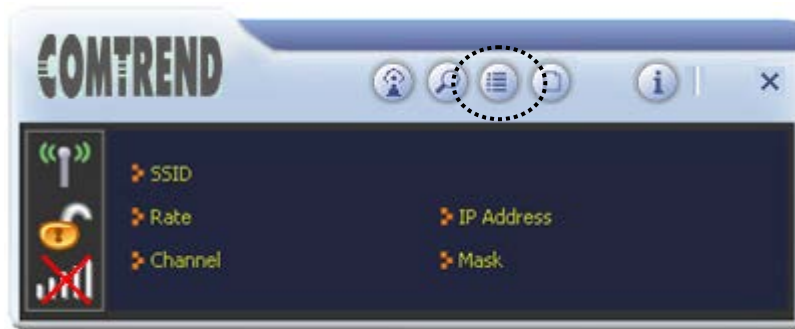
There are 6 fields in the ‘Site Survey’ list:



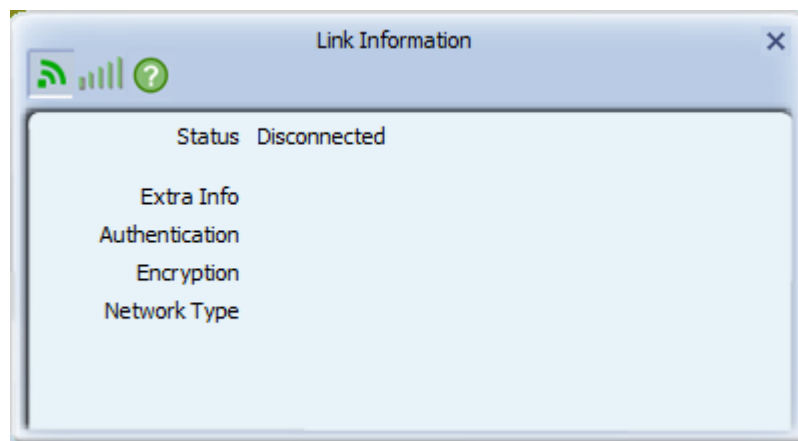
Field#	Description
1 (SSID)	The Service-Set IDentifier of the network device (The name of network device)
2 (Type)	The type of network device   Infrastructure (Access Point)  Ad-Hoc
3 (Channel)	The channel number of this network device
4 (Wireless mode)	Available wireless modes:  802.11a wireless capability  802.11b wireless capability  802.11g wireless capability  802.11n wireless capability  802.11ac wireless capability
5 (Security)	Security mode. When nothing is displayed here (as we have indicated by the red arrow above), it means this network device does not require security and anyone can connect to it. The  icon indicates that a security password is required. The  icon indicates that WPS connection is possible.
6 (Signal Strength)	Shows the wireless signal strength in percentage. The higher the percentage the better the signal quality.

## 4-4 Link Information

You can check the status of an active wireless connection by clicking the 'Link Information'  button:



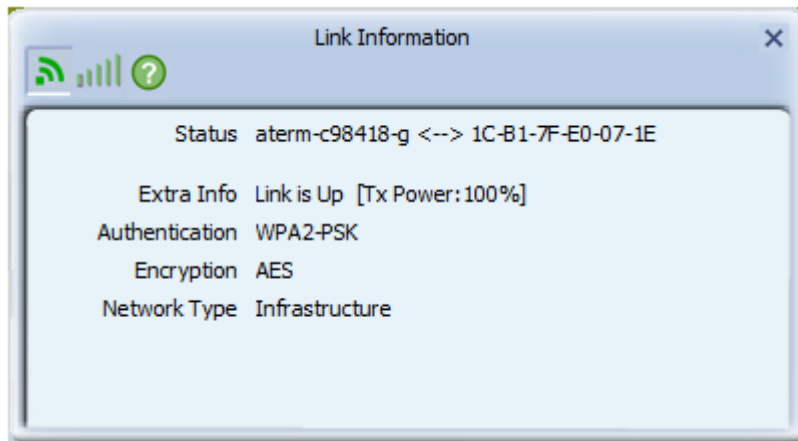
A new window will appear:



There are 3 kinds of link information:

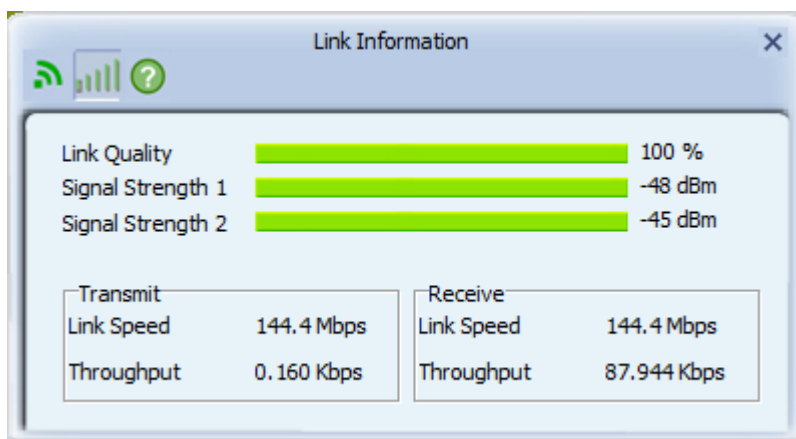
### 1. Link status

Displays the status of the active connection.



## 2. Throughput

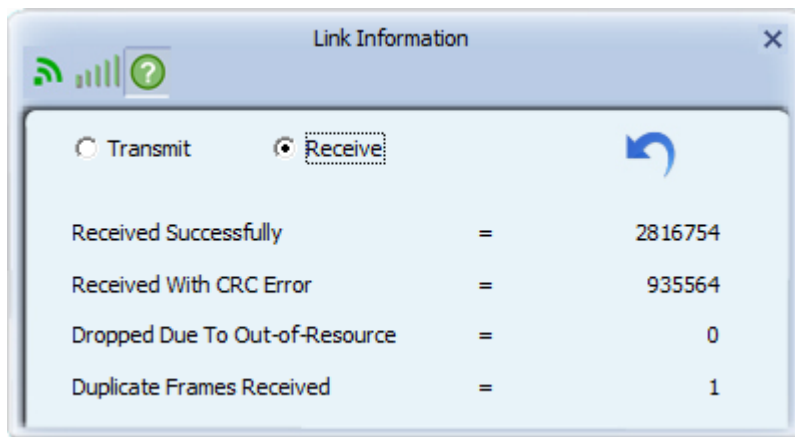
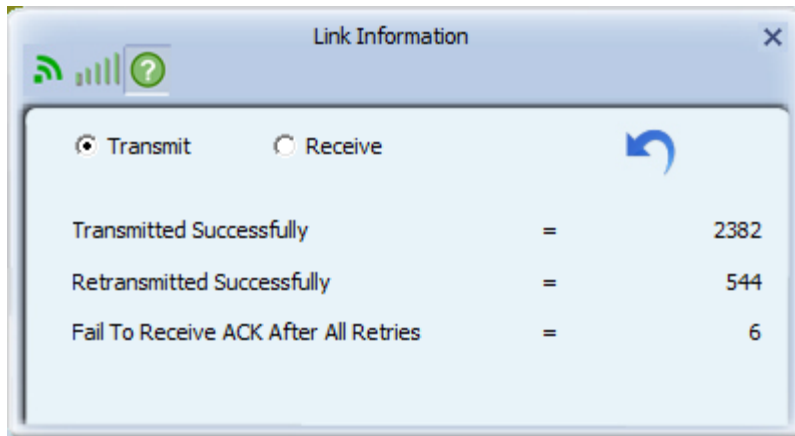
Displays the throughput of the active connection.



## 3. Statistics

Displays the statistics of the active connection. Select 'Transmit' or 'Receive' to switch displaying statistics of transmitted and received data packets.

To reset counters, click 




## 4-5 Profile Settings

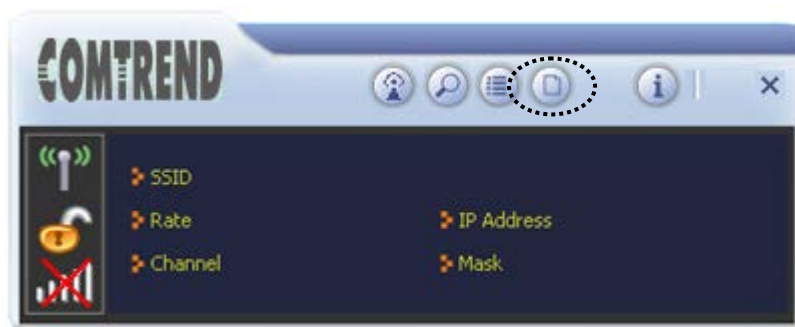
For connections you'll frequently use, you can save them as a profile and you can recall all settings (security type, password, etc.) when required.


### 4-5-1 Add a new entry

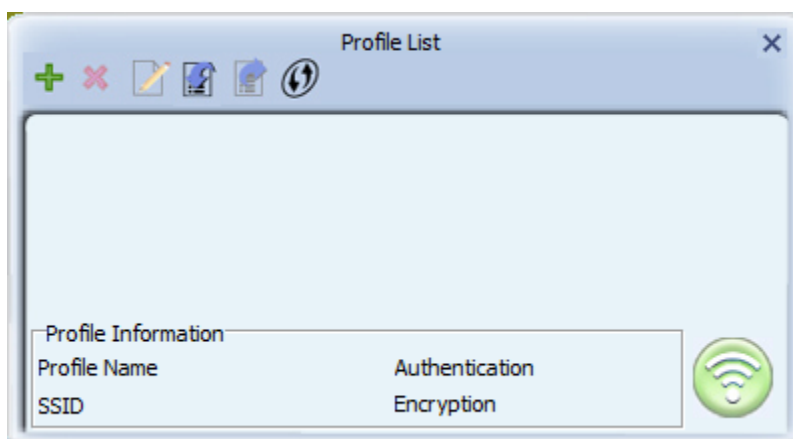
Using this function you can setup the connection parameters for a specific wireless access point in advance, so you can recall a set of connection parameters quickly.

To do this, follow the procedures below:

1. Click 'Profile'  in the configuration utility:

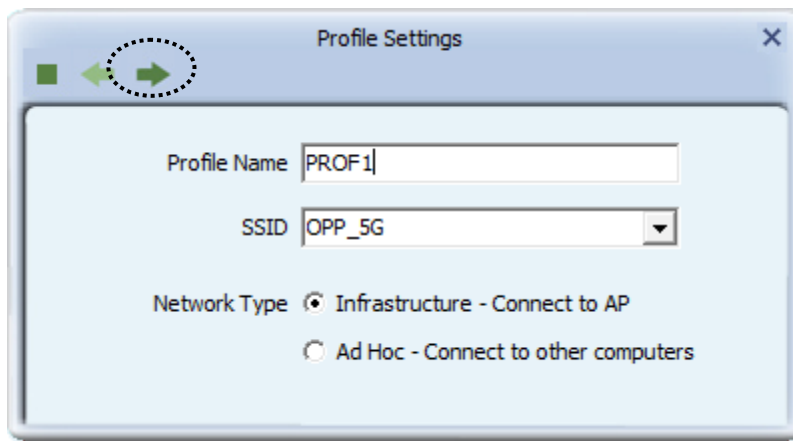


2. The profile manager will appear. Click the plus sign  to add a new profile.

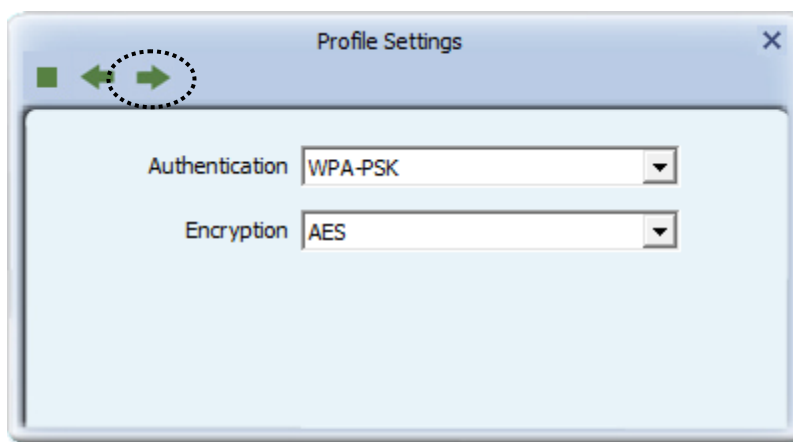


3. Give a name to the profile in the 'Profile Name' field, and select the AP you wish to connect to from the 'SSID' dropdown list, then click the right arrow ➡.

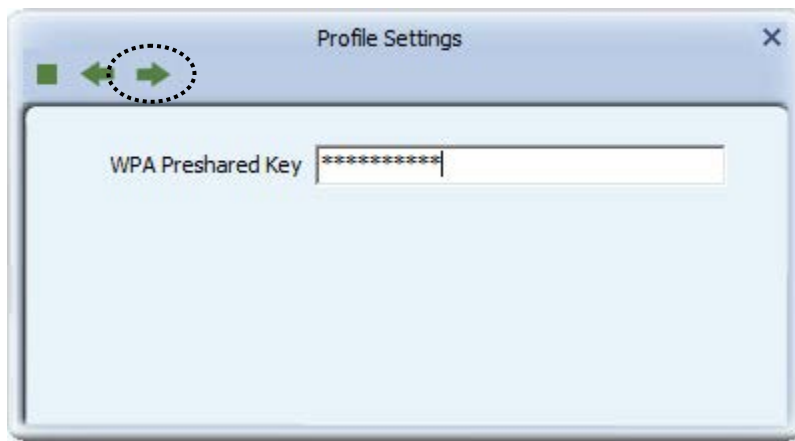
If you're connecting to a network device using AD-HOC connection method, select 'Ad Hoc - Connect to other computers' first.



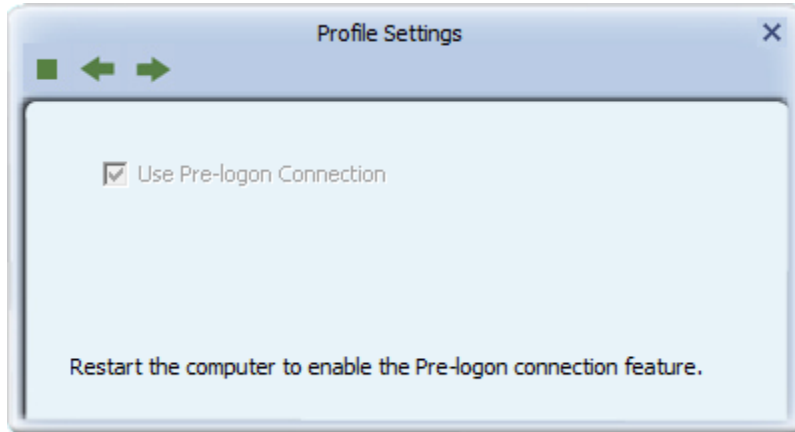
4. Select this AP's authentication and encryption method from the dropdown list, then click the right arrow ➡.



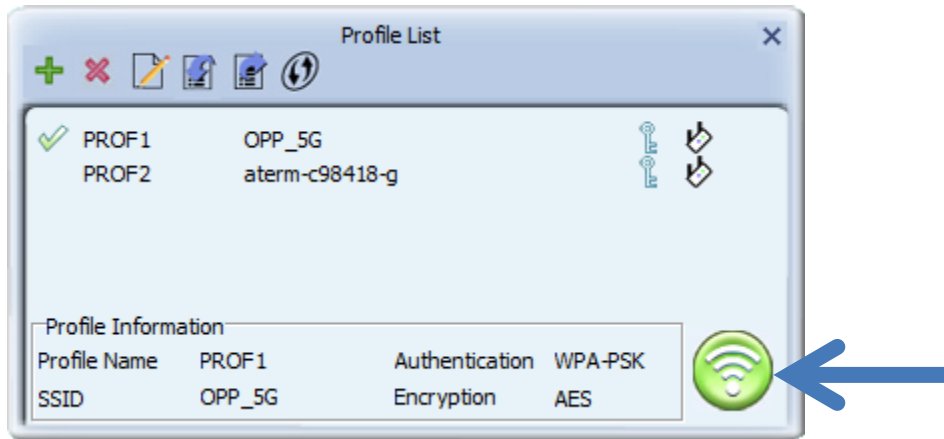
5. Input the passphrase key here (or WEP key, if required), then click the right arrow ➡:



6. Check this box if you wish to enable pre-logon connection. When this feature is enabled, the wireless network connection will be established before you logon to Windows so you can authenticate yourself against the network server. If you don't need this, you can leave this box unchecked. Click the right arrow ➡ to continue.




7. The profile will be saved in the list:

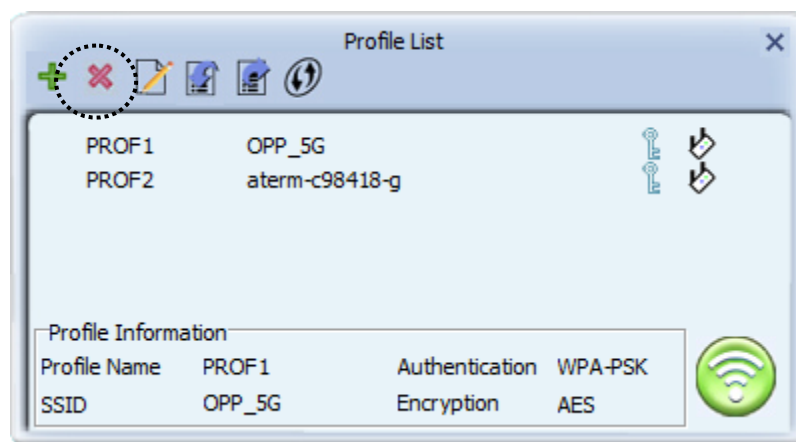


You can repeat steps 2 to 6 to setup more profiles of wireless connections. When you wish to connect to a certain wireless access point, click 'Activate' button (as indicated above).

A check mark  will be displayed beside active profile.

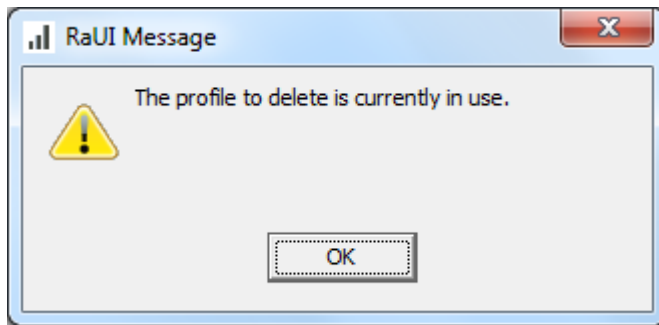
#### 4-5-2 Remove an existing profile

When you no longer need an existing profile, just select it from the list and click the 'Delete'  button.




If the profile you wish to delete is active now, you'll be prompted to confirm the deletion:

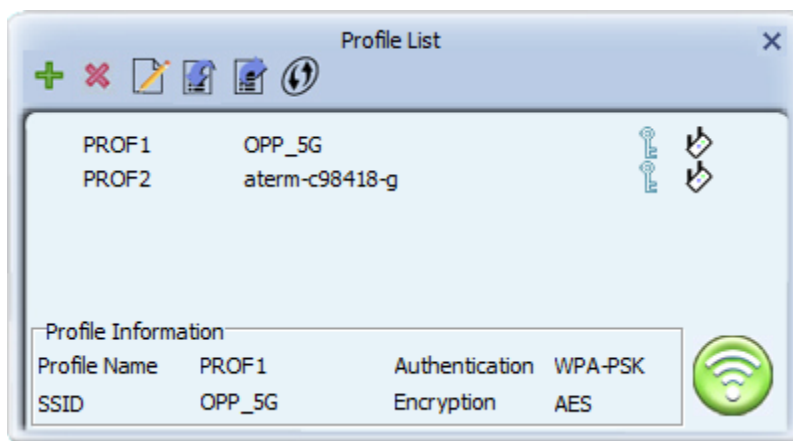




To delete anyway, click the 'OK' button; to cancel, click the  mark.

#### 4-5-3 Edit an existing profile


If you have added a profile before, and you wish to change the content of the profile, you can use this function. Select a profile from the list first, then click the 'Edit'  button.

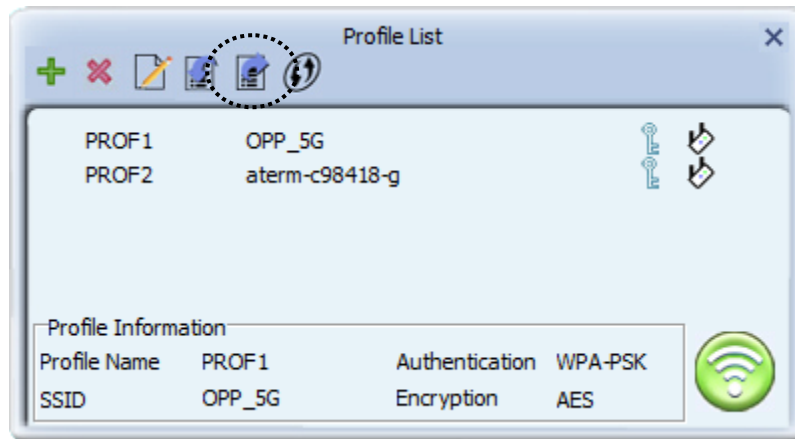


You'll be provided with the contents of the selected profile; you can edit them and save the changes.

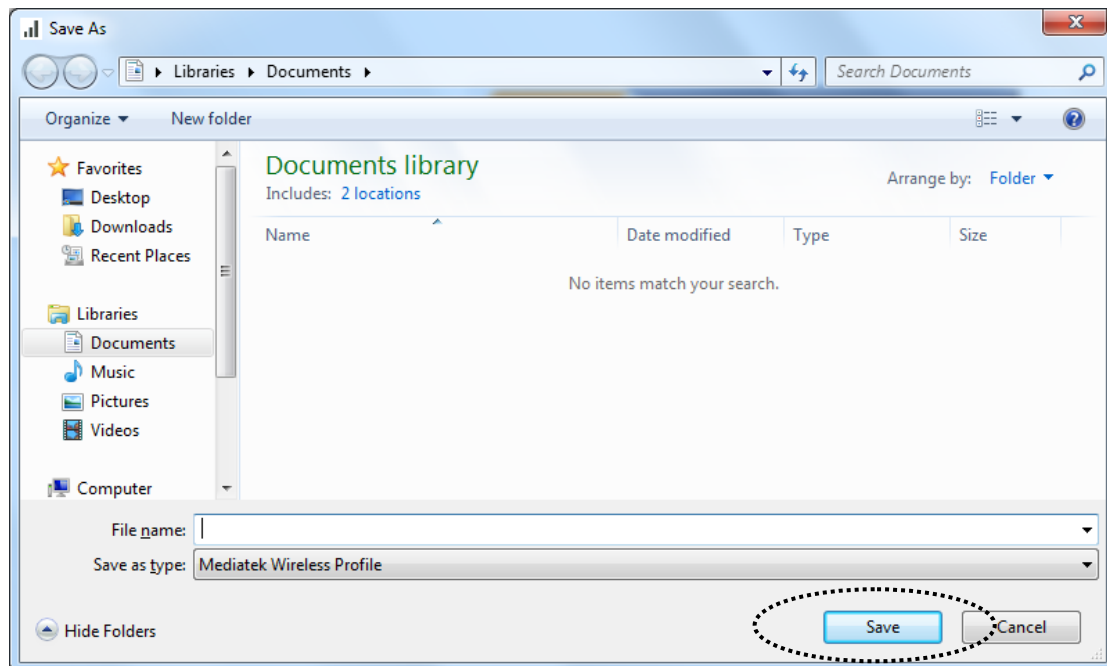
#### 4-5-4 Import / Export profile


If you need to move your wireless settings to another computer, or you just want to make a backup, you can use the import / export function to make a copy, or restore the current profile.

To backup a profile, click 'Export' :



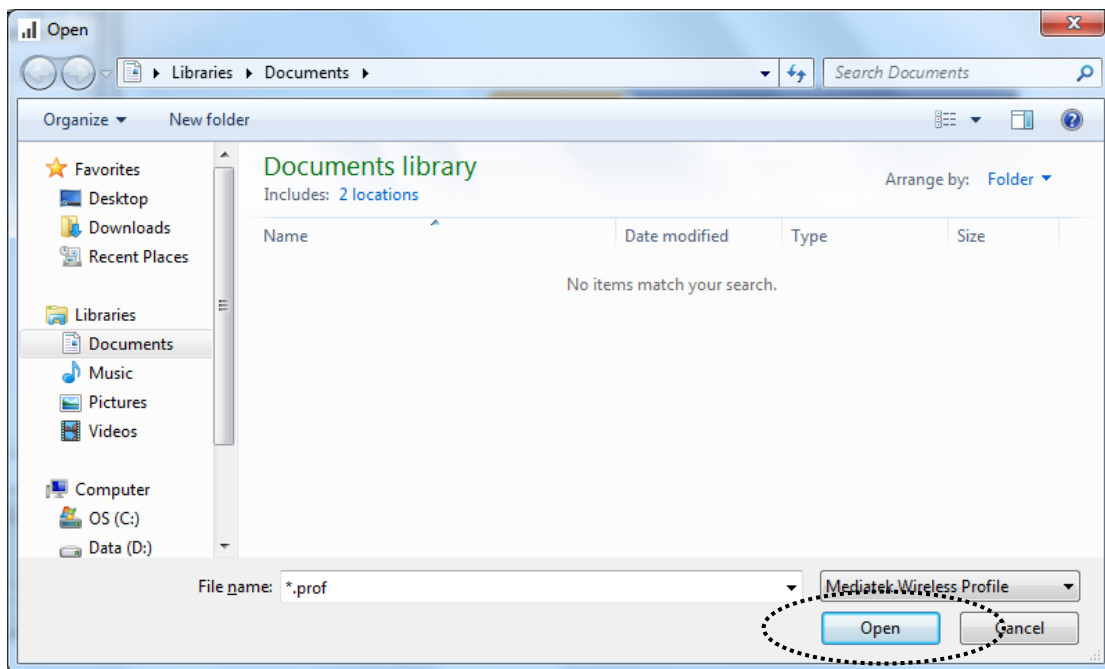
You'll be prompted to select a place to save the profile setting file. Select a folder in your computer and name the profile, then click the 'Save' button.



To recall previously-saved profiles, click 'Import'  :



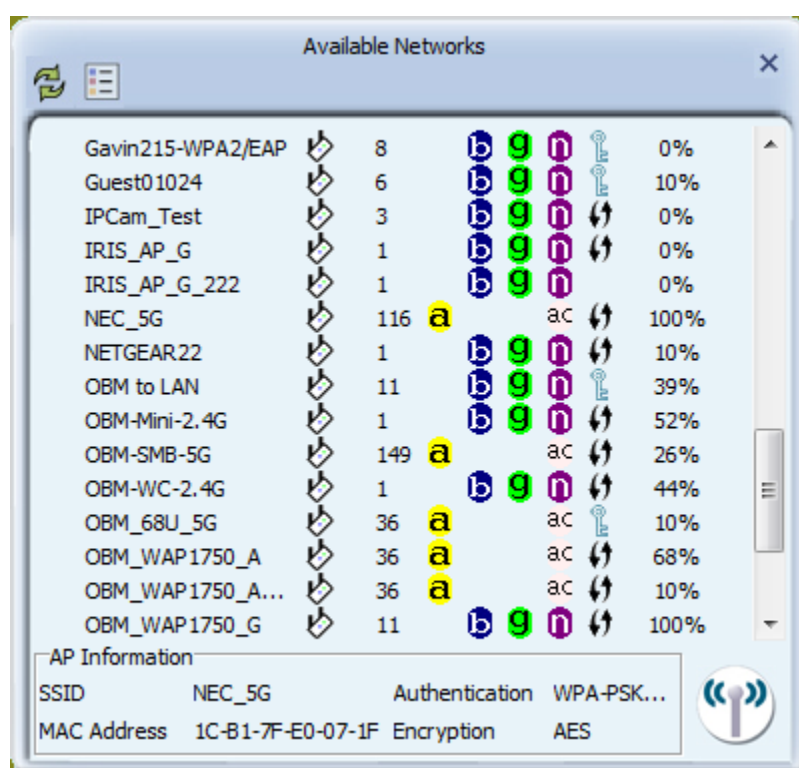
Select a profile (file with .prof extension), and click 'Open'. Please note that this will overwrite any existing profile(s).





## 4-5-5 WPS Profile Setup

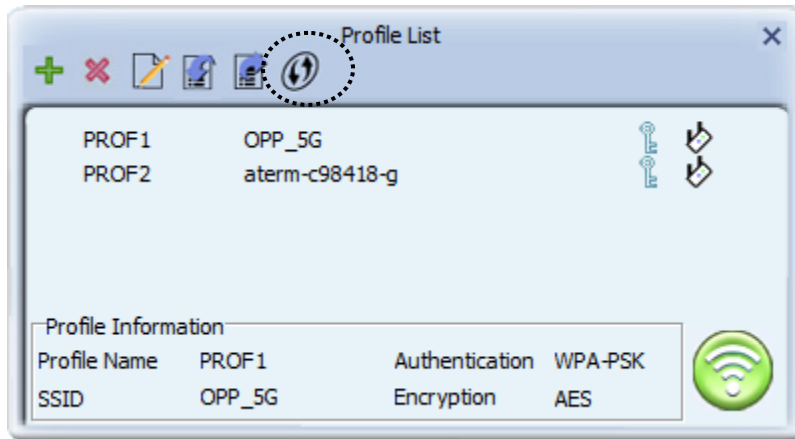
WPS (Wi-Fi Protected Setup) is a new, convenient way to setup secured wireless connections. You only need to push a button or input an 8-digit random number, and you can setup a secure connection between wireless devices.

To use WPS profile, you need to make sure the access point you wish to connect to supports WPS first. You can discover if an access point is WPS-capable or not by site-survey:

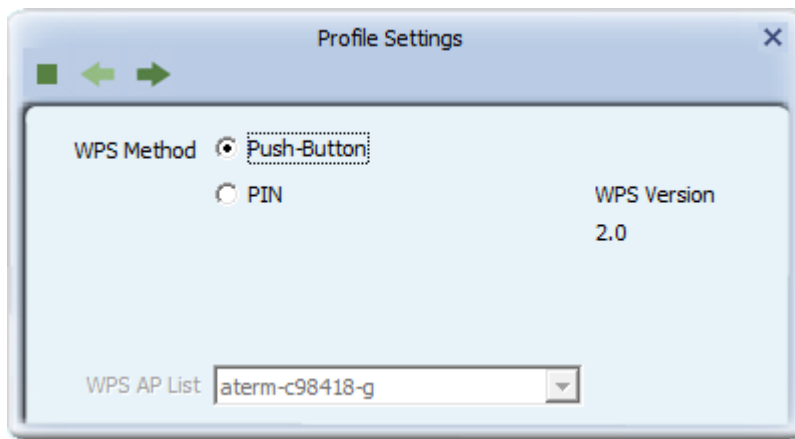


In this list, there are ten access points that support WPS, which are indicated by the  icon.

You can still establish secured connection with WPS-capable access points in a conventional way. To establish WPS-style connection, click the 'Add WPS profile'  button:



You'll be prompted to select the WPS method and WPS AP:



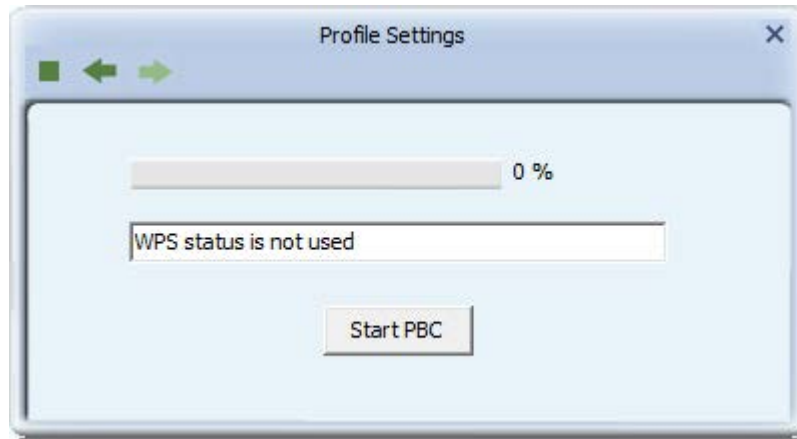
To use a PIN (an 8-digit or 4-digit random number) to setup WPS, select 'PIN / numeric code', and you need to select an AP from the 'WPS AP List' dropdown menu; to establish connection by Push-Button Configuration (PBC), you don't have to select an AP from the 'WPS AP List' dropdown list.

***Note: This device follows the WPS 2.0 Standard Specification to allow inputting a 4-digit PIN code. Make sure your Wireless Router or Access Point supports WPS 2.0 accordingly, or use an 8-digit PIN as usual.***

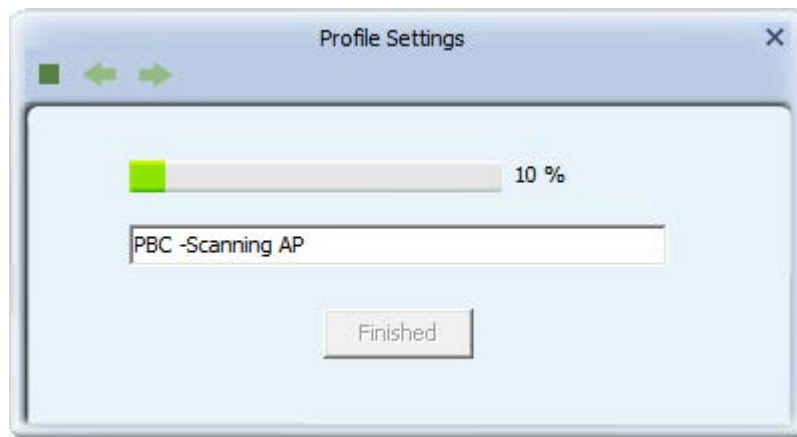
Click the right arrow  to continue.

#### 4-5-5-1 PBC mode WPS configuration

When you want to use 'PBC' mode:



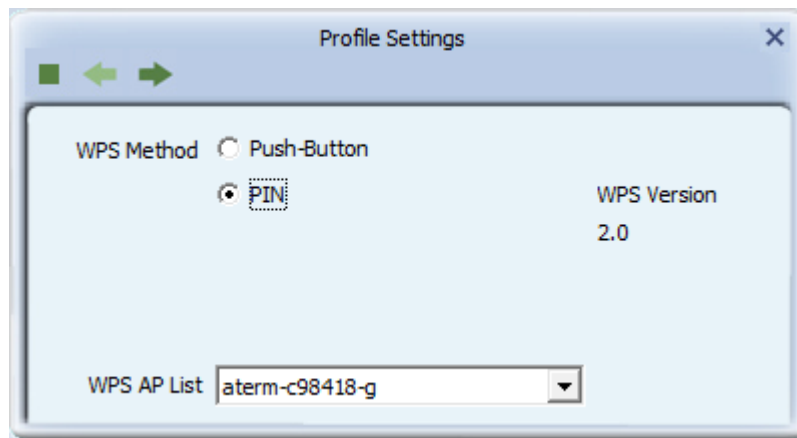
Click the 'Start PBC' button:



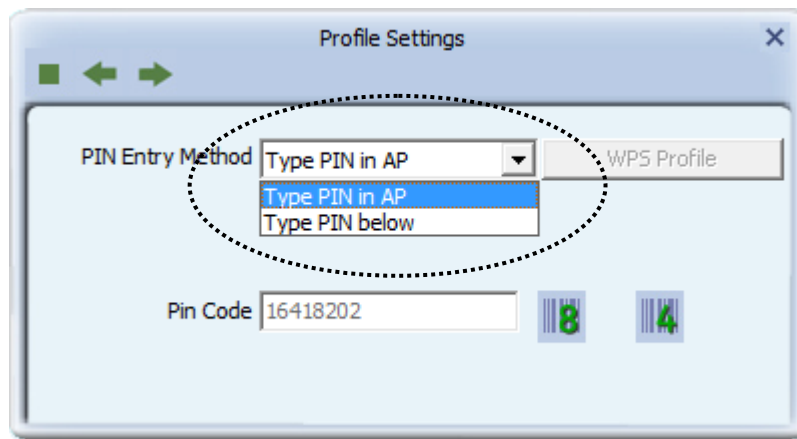
Now, push the WPS button on the access point (a physical button or a software button in its configuration menu - please refer to access point's user manual) within 2 minutes.

#### 4-5-5-2 PIN mode WPS configuration

To setup WPS connection by PIN, select 'PIN / numeric code', and then click the right ➡ arrow.



There are two methods in PIN mode WPS configuration: 'Type PIN in AP' and 'Type PIN below'. 'Type PIN in AP' is the one that searches for WPS registrar and will attempt to connect to it and 'Type PIN below' is the one that waits for an incoming WPS request.

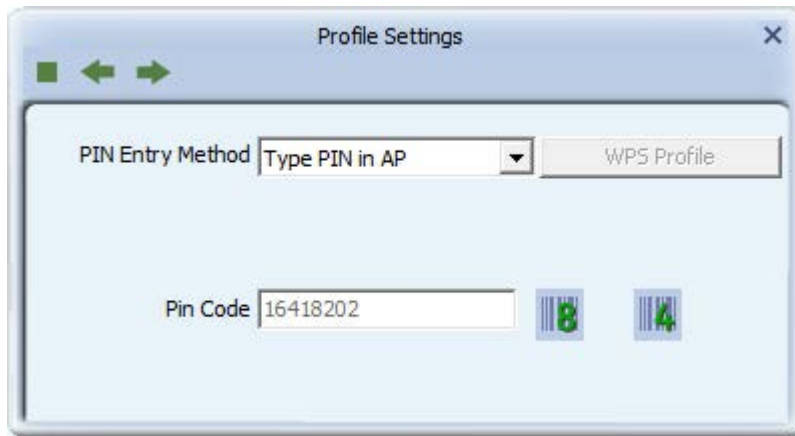



The WPS role of the two devices should not be same: When one device is registrar, the other one must be enrollee, and vice versa.

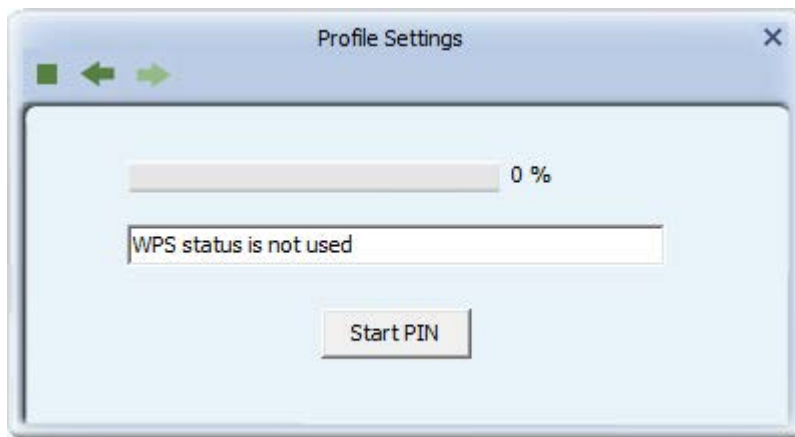
There will be a menu displaying 2 methods on the configuration menu,

## 1. Type PIN in AP

Select 'Type PIN in AP' in the 'PIN Entry Method' dropdown list. There will be a menu displaying an 8-digit WPS PIN code on the configuration menu.

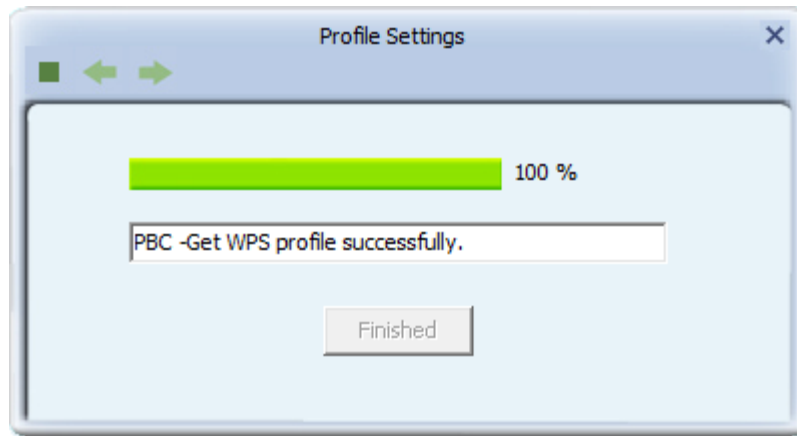


Remember the number and input the PIN code in the web page of router/AP in a short period of time(2 minutes or so), then click the right  arrow.



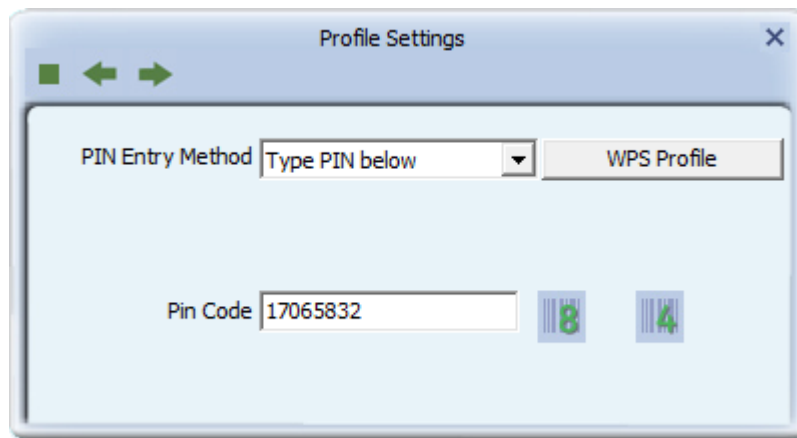
Click the 'Start PIN' button to begin WPS connection, please be patient. You'll be prompted when the WPS connection is established successfully; if you received an error, you can try again, but please remember to make sure the PIN you obtained from the access point is still valid.





## 2. Type PIN below

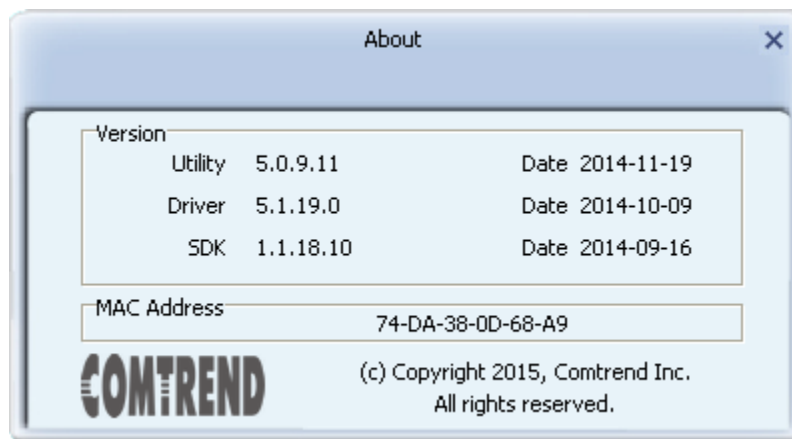
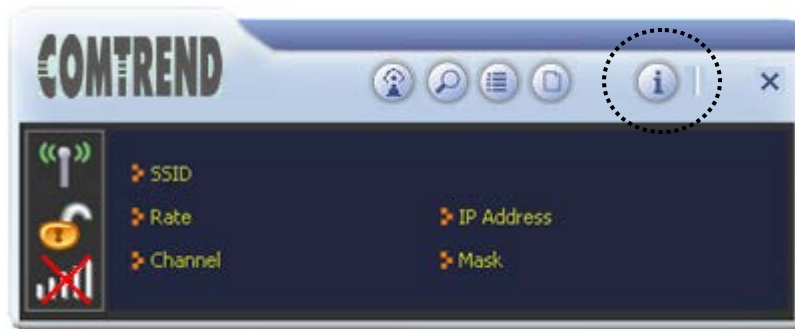
Select 'Type PIN below' in the 'Config mode' dropdown list, and input the PIN code in the 'Pin Code' field, then click the right ➡ arrow.



Please be patient. You'll be prompted when WPS connection is successfully established.

## 4-6 About

Click this button to see the version information of the software AP configuration utility.



## CHAPTER 5 Troubleshooting

If you encounter any problem when you're using this wireless USB adapter, don't panic! Before you call your dealer of purchase for help, please check this troubleshooting table, the solution of your problem could be very simple, and you can solve the problem by yourself!

Scenario	Solution
I can't find any wireless access point / wireless device in 'Site Survey' function.	<ol style="list-style-type: none"> <li>1. Click 'Rescan' for few more times and see if you can find any wireless access point or wireless device.</li> <li>2. Please move closer to any known wireless access point.</li> <li>3. 'Ad hoc' function must be enabled for the wireless device you wish to establish a direct wireless link.</li> <li>4. Please adjust the position of the USB adapter (you may have to move your computer if you're using a notebook computer) and click 'Rescan' button for few more times. If you can find the wireless access point or wireless device you want to connect by doing this, try to move closer to the place where the wireless access point or wireless device is located.</li> </ol>
Nothing happens when I click 'Launch config utilities'	<ol style="list-style-type: none"> <li>1. Please make sure the wireless USB adapter is inserted into your computer's USB port. If the Comtrend configuration utility's icon is black, the USB adapter is not detected by your computer.</li> <li>2. Reboot the computer and try again.</li> <li>3. Remove the card and insert it into another USB port.</li> <li>4. Remove the driver and re-install.</li> <li>5. Contact the dealer of purchase for help.</li> </ol>

<p>I cannot establish connection with a certain wireless access point</p>	<ol style="list-style-type: none"> <li>1. Click 'Connect' for few more times.</li> <li>2. If the SSID of access point you wish to connect is hidden (nothing displayed in 'SSID' field in 'Site Survey' function), you need to input the correct SSID of the access point you wish to connect. Please contact the owner of access point to ask for correct SSID.</li> <li>3. You need to input correct passphrase / security key to connect an access point with encryption. Please contact the owner of access point to ask for correct passphrase / security key.</li> <li>4. The access point you wish to connect only allows USB adapters with specific MAC address to establish connection. Please go to 'About' tab and write the value of 'Phy_Address' down, then present this value to the owner of access point so he / she can add the MAC address of your USB adapter to his / her access point's list.</li> </ol>
<p>The network is slow / having problem when transferring large files</p>	<ol style="list-style-type: none"> <li>1. Move closer to access point location.</li> <li>2. Enable 'Wireless Protection' in 'Advanced' tab.</li> <li>3. Try a lower TX Rate in 'Advanced' tab.</li> <li>4. Disable 'Tx Burst' in 'Advanced' tab.</li> <li>5. Enable 'WMM' in 'QoS' tab if you need to use multimedia / telephony related applications.</li> <li>6. Disable 'WMM – Power Save Enable' in 'QoS' tab.</li> <li>7. There could be too many people using the same radio channel. Ask the owner of the access point to change the channel number.</li> </ol> <p>Try one or more solutions listed above.</p>