

User Guide

www.comtrend.com



ES-7205 5-port Fast Ethernet Switch
ES-7208 8-port Fast Ethernet Switch

Preface

This manual provides information related to the installation and operation of this device. The individual reading this manual is presumed to have a basic understanding of telecommunications terminology and concepts. If you find the product to be inoperable or malfunctioning, please contact Comtrend technical support.

Important Safety Instructions

With reference to unpacking, installation, use and maintenance of your electronic device, the following basic guidelines are recommended:

- Do not use or install this product near water, to avoid fire or shock hazard. For example, near a bathtub, kitchen sink or laundry tub, or near a swimming pool. Also, do not expose the equipment to rain or damp areas (e.g. a wet basement).
- Do not connect the power supply cord on elevated surfaces. Allow it to lie freely. There should be no obstructions in its path and no heavy items should be placed on the cord. In addition, do not walk on, step on or mistreat the cord.
- Use only the power cord and adapter that are shipped with this device.
- To safeguard the equipment against overheating, make sure that all openings in the unit that offer exposure to air are not blocked.
- Avoid using a telephone (other than a cordless type) during an electrical storm. There may be a remote risk of electric shock from lightning. Also, do not use the telephone to report a gas leak in the vicinity of the leak.
- Never install telephone wiring during stormy weather conditions.



WARNING

- Disconnect the power line from the device before servicing.

Copyright

Copyright © May , 2011 Comtrend Corporation. All rights reserved. The information contained herein is proprietary to Comtrend Corporation. No part of this document may be translated, transcribed, reproduced, in any form, or by any means without prior written consent of Comtrend Corporation.

NOTE: This document is subject to change without notice.

Contents

1. Introduction	4
1.1 Switch Features.....	4
1.2 Package Contents	5
1.3 Front and Rear Panel Specifications	5
1.4 LED Indicator Specifications.....	6
2. Installation.....	7
2.1 Before Connecting to the Network	7
2.2 Connecting to End Nodes	7
2.3 Switch to Router or Router to Switch.....	8
3. Product Specification	9

1. Introduction

The ES-7205/ES-7208 Ethernet Switches are designed for small office, home office (SOHO) applications. They have five or eight 10/100Mbps Auto-negotiation Ethernet ports, support auto MDI/MDI-X and store-and-forward functionality to ensure proper packet forwarding. Plug and play functionality makes setup hassle-free. In addition, each switch supports MAC address auto-learning and aging. The ES-7205 and ES-7208 support up to a 2k MAC address table.

1.1 Switch Features

- Complies with the IEEE802.3 10Base-T Ethernet, IEEE802.3u 100Base-TX Fast Ethernet standards.
- Supports auto-negotiation, auto-detect data rates, and Half and Full-duplex modes.
- Provides five or eight 10/100Mbps Auto-sensing RJ-45 ports and supports Auto MDI/MDI-X.
- Supports IEEE802.3x flow control for Full-duplex, and Backpressure flow control for Half-duplex.
- Supports non-blocking line speed forwarding.
- Supports store-and-forward switching.
- Supports MAC address auto-learning/aging function
- 2K MAC address table.

1.2 Package Contents

Please check each item carefully after you open the packaging:

- One 5/8-Port Fast Ethernet Switch
- One Power Adapter
- One User Guide

If any of the listed items are missing or damaged, please contact the reseller from whom you purchased for a replacement.

1.3 Front and Rear Panel Specifications

The front panel of the ES-7205 and ES-7208 Fast Ethernet Switches includes Link/Act indicators and one power indicator. Please refer to the detailed description of these indicators in the LED Indicator Specifications section.

The Rear Panel of the Switch includes five or eight 10/100Mbps RJ-45 Fast Ethernet ports. One AC power port is located on the side panel of the Switch.

Notice: Only use the included power supply. Using any other power supply may permanently damage the Switch.

1.4 LED Indicator Specifications

The LED indicators on the Switch include Power and Link/Act. You can see their operating situation through these LED indicators.

The following chart shows the LED indicators of the Switch along with an explanation of each indicator.

LED	Color	Status	Description
Power	Green	ON	This indicator is lit when the Switch is powered on.
	—	OFF	If this indicator is not lit, please check the AC power connector to ensure the correct connection of the power adapter.
Link/ Act	Green	ON	The Ethernet port has an active connection
	Green	Blinking	The port is transmitting or receiving data packets.

2. Installation

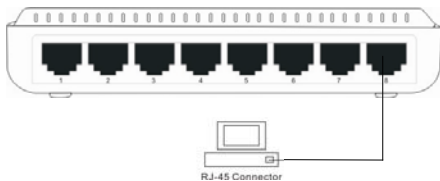
2.1 Before Connecting to the Network

Before connecting the ES-7205/ES-7208 to the network, please pay attention to the following instructions:

- Do not put anything on top of the Switch. Place on a hard, flat surface.
- Power sockets and equipment should be within 5 feet of the Switch.
- Check power supply to confirm a safe and secure connection.
- Make sure there is adequate space for proper heat dissipation and adequate ventilation around the Switch.

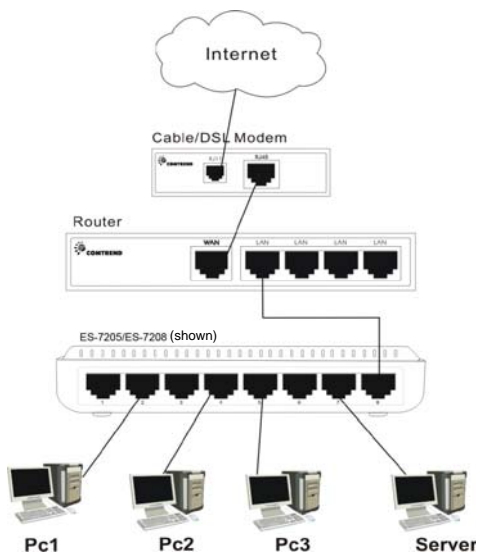
2.2 Connecting to End Nodes

Use a standard Ethernet cable to connect the Switch to end nodes as described below. Switch ports will automatically adjust to the characteristics (MDI-II/MDI-X, speed, duplex) of the device to which it is connected



Switch connecting to an end node

2.3 Switch to Router or Router to Switch



Connecting to another router or switch

3. Product Specification

Standards	IEEE802.3 10Base-T Ethernet IEEE802.3u 100 Base-TX Fast Ethernet
Protocol	CSMA/CD
Topology	Star
Network Cables	10 Base-T: Cat.3 UTP or above 100 Base -TX: Cat.5 UTP /STP
Speed	10/100Mbps
Transmission Method	Fast store-and-forward
MAC Address Table	2K
Packet Filtering/ Forwarding Rate	14880pps(10Mbps)per port
	148800pps(100Mbps)per port
MAC Address Learning	Self-learning, auto-aging.
Backplane Bandwidth	1Gbps(ES-7205) 1.6Gbps(ES-7208)
Power	External universal power supply
AC INPUT	AC 9V 600mA
Power Consumption	2.7W(ES-7205) 4.2W(ES-7208)
Operating Temperature	0°C -40°C
Storage Temperature	-40°C -70°C
Working Humidity	10% ~ 90% RH (non-condensing)
Storage Humidity	5% ~ 95% RH (non-condensing)

Address : 16 Goodyear, Suite 120
Irvine, CA 92618, USA

Warranty : 2 Years

Support : homesupport@comtrend.com